

INTELLIGENT VIDEO SURVEILLANCE

2024 Product Guide

GRUNDIG
SECURITY



What should a video surveillance system of today be able to deliver?

Many small to medium-sized systems can manage without any special requirements. Often, it's enough just to save video sequences, so that in case of an incident the course of events can be determined in the light of the recordings. For standard applications like this, GRUNDIG Security offers a comprehensive range: cameras that supply perfect high-resolution images, irrespective of the light conditions, and recorders that store video sequences for weeks or months when required, even if this is rarely done today for reasons of data privacy.

So much for standard applications. But the unique thing about GRUNDIG Security is the uncomplicated forensic search function of the GRUNDIG Video Management System powered by C-WERK®. This makes it possible for you to find the recordings that really interest you in a gigantic archive of video data, with no effort at all and in next to no time.

As an installer or end user of the new GRUNDIG products and solutions, what can you expect? Leaving our tried and tested reliability aside, you will also find a whole lot of image analysis functions, for the most part supported by artificial intelligence (AI). And there's a lot

of functionality available. You can use facial recognition, for instance, to recognise people, or the LPR function to identify vehicle licence plates. Or you can quite simply reduce the frequency of false alarms signalling a spurious break-in or perimeter breach, by classifying objects as 'vehicle', 'person' or 'other'.

Cameras from GRUNDIG Security can see whether your employees are wearing the mandatory helmets or protective gear. They can recognise faces in crowds of people, count heads and determine the length of queues at your supermarket till, so helping you to make the best possible use of your resources. What is more, they can even read body language. If a person shows an unusual or unnatural posture, an alarm will be triggered. So, you will be warned in good time, before your cash machine risks being blown sky-high.

These are just a few examples out of a plethora of possibilities, which the exceptionally flexible video surveillance systems from GRUNDIG Security are able to offer.

So, if you want more than just pretty pictures and long recording times, please get in touch — we'll be happy to hear from you!



Content

Cameras

| | |
|-----------------|----|
| Box/Cube/Turret | 6 |
| Fixed Domes | 7 |
| Bullet | 9 |
| Panoramic | 12 |
| PTZ Domes | 13 |
| Thermal Imaging | 14 |

Recorders

| | |
|----------------------------------|----|
| Standalone NVR | 16 |
| PC based NVR | 18 |
| Video Management Software C-WERK | 20 |

Hardware

| | |
|-------------------|----|
| Client/ Server PC | 24 |
| Switches | 25 |

HD Analogue

Cameras

| | |
|-----------------------------|----|
| Box/Cube/Turret/fixed Domes | 26 |
| Bullet/PTZ Domes | 27 |

Recorders

| | |
|-----------------|----|
| Standalone HDVR | 28 |
|-----------------|----|

Monitors 30

Accessories 32

Lenses 38

Controllers 38

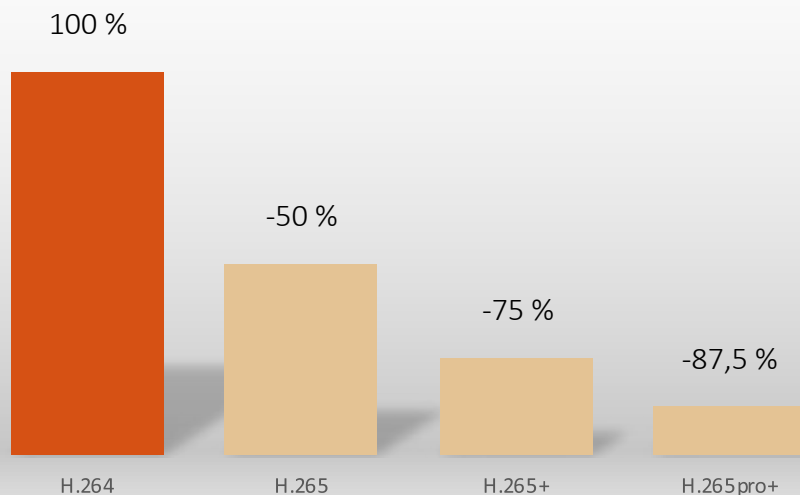


3 Years Extended Guarantee

Grundig has launched a new 3-year Guarantee on “PRO” and “PREMIUM” cameras to further support customers and make project maintenance easier and more cost-effective.

Grundig takes quality seriously and puts a lot of effort into ensuring our products are both innovative and reliable. To give customers greater peace of mind, the 3-year Guarantee will be added for pro premium product on electronic parts from 1 January 2021. Mechanical wear and tear on moving parts is not included. Please note our general delivery terms and conditions.

24 Hour Recording File Size



H.265pro+

Ultra HD security cameras have been in production for a while but were not immediately adopted and widespread because they require excessive transmission bandwidth and enormous storage capacity. The problem can be solved by using H.265pro+ encoding technology, which uses an average of about 87.5 % of the bit rate of H.264. As the bit rate of the recorded video material is greatly reduced, the bandwidth and storage costs are also reduced. H.265pro+ is based on the standard format H.265/High Efficiency Video Coding (HEVC). With H.265pro+, the video quality is close to that of H.265/HEVC, but reduces the required transmission bandwidth and storage capacity due to three key technologies: predictive coding, noise reduction and flexible bit rate control. It shows significant improvements in bandwidth reduction, data storage efficiency and the analysis of video content.



Many Grundig Recorders, Cameras and Video Management Software have deep Learning Analytics Functions

The rapid development of algorithms, neural networks, human-machine interfaces and computing power is now taking deep learning applications to a new level. Deep learning has also reached the security industry and enables a number of solutions, not only to improve the security of the company premises and to efficiently suppress unwanted alarms. The benefits of deep learning for attribute recognition and image classification make it extremely valuable in the security arena. It touches every aspect of the security industry — from face and vehicle recognition to behavior analysis. Deep learning is a type of machine learning that trains a computer to analyze human-like tasks like recognizing language, classifying images, recognizing objects, and even people's behavior. A real example are virtual assistants like Siri and Cortana, some of which are powered by artificial intelligence. Rather than organizing data to loop through predefined equations, deep learning sets basic parameters for the data and trains the computer to learn on its own by recognizing patterns using processing layers.

Cybersecurity

Grundig Security supports internationally recognized cyber security standards and best practices. We make extensive efforts to improve the network security of our products and solutions. We continue to improve and use open and transparent methods so that users can evaluate the cybersecurity features of Grundig products. You can find more detailed information on IT security in our product data sheets and our „White Paper Cybersecurity“.



GD-CI-AP2605B



GD-CI-AT8505B



GD-CI-AP4617C



GD-CI-BC2615M



GD-CI-AC6614E



GD-CI-AP8617E



GD-CI-CP4637E

| | Professional | Premium | Professional | Essential | Essential | Professional | Professional |
|-----------------------------|-------------------------------------|---|-------------------------------------|-----------------------------------|-------------------------------------|-------------------------------------|-------------------------------------|
| Video Resolution | 1920 x 1080 | 3840 x 2160 | 2688 x 1520 | 1920 x 1080 | 3200 x 1800 | 3840 x 2160 | 2688 x 1520 |
| Sensitivity Colour | 0.01 Lux @ F1.2 (AGC ON) | 0.007 Lux @ F1.2 (AGC ON) | 0.01 Lux @ F1.2 (AGC ON) | 0.01 Lux @ F2.0 (AGC ON) | 0.005 Lux @ F1.6 (AGC ON) | 0.005 Lux @ F1.6 (AGC ON) | 0.005 Lux @ F1.6 (AGC ON) |
| Lens Focal Length | — | — | 2.8 mm | 3.7 mm | 2.8 mm | 2.8 mm | 2.8 ~ 12 mm motorized, auto-focus |
| Col/B&W | IR-cut filter removable (ICR) | IR-cut filter removable (ICR) | IR-cut filter removable (ICR) | — | IR-cut filter removable (ICR) | IR-cut filter removable (ICR) | IR-cut filter removable (ICR) |
| Wide Dynamic Range | 120 dB | 120 dB | 120 dB | 120 dB | 120 dB | 120 dB | 120 dB |
| Image Enhancement | BLC, 3D DNR | BLC, 3D DNR, Defog, EIS, HLC | BLC, 3D DNR, HLC | BLC, 3D DNR, HLC | BLC, 3D DNR, HLC | BLC, 3D DNR, HLC | BLC, 3D DNR, HLC |
| Max. IR Distance | — | — | Up to 10 m | — | Up to 30 m | Up to 30 m | Up to 40 m |
| Video Compression | H.264, H.264+, H.265, H.265+, MJPEG | H.264, H.264+, H.265, H.265+, MJPEG | H.264, H.264+, H.265, H.265+, MJPEG | H.264, H.265, MJPEG | H.264, H.264+, H.265, H.265+, MJPEG | H.264, H.264+, H.265, H.265+, MJPEG | H.264, H.264+, H.265, H.265+, MJPEG |
| SD Memory | up to 128G, ANR Function | up to 256G, ANR Function | up to 128G, ANR Function | up to 256G, ANR Function | up to 256G, ANR Function | up to 256G, ANR Function | up to 256G, ANR Function |
| Video Outputs | 1x CVBS (1 Vcc) BNC | 1 CVBS Test Monitor output | — | 1x CVBS (1 Vcc) BNC | — | — | 1x CVBS (1 Vcc) BNC |
| Alarm Input/Output | yes | yes | — | yes | — | — | yes |
| Audio Input/Output | yes | yes | — | yes | — | Built-in microphone | yes |
| Intelligent Video Analytics | MD, PID, LCD, VTD | MD, PID, LCD, A-IN, A-OUT, SOD, FD, VTD, SD | MD, PID, LCD, FD, VTD | — | MD, VTD | MD, PID, LCD, FD, PD & VD, VTD | MD, PID, LCD, FD, PD & VD, VTD |
| Surge Protection | — | — | — | — | — | — | TVS 2000V |
| Operating Temperature | -30 °C ~ 60 °C (-22 °F ~ 140 °F) | -30 °C ~ 60 °C (-22 °F ~ 140 °F) | -10 °C ~ 50 °C (-14 °F ~ 122 °F) | -30 °C ~ +55 °C (-22 °F ~ 131 °F) | -30 °C ~ 60 °C (-22 °F ~ 140 °F) | -30 °C ~ 60 °C (-22 °F ~ 140 °F) | -30 °C ~ 60 °C (-22 °F ~ 140 °F) |
| Supply Voltage | 12 VDC, 24 VAC, PoE (IEEE 802.3af) | 12 VDC, 24 VAC, PoE (IEEE 802.3af) | 12 VDC, PoE (IEEE 802.3af) | 12 VDC ±10% | 12 VDC, PoE (IEEE 802.3af) | 12 VDC, PoE (IEEE 802.3af) | 12 VDC, PoE (IEEE 802.3af) |
| Power Consumption | Max. 6 W | Max. 10 W | Max. 7 W | Max. 3 W | Max. 6.5 W | Max. 7.5 W | Max. 12,5 W |





GD-CI-CC2616V



GD-CI-EC4617V



GD-CI-FC4617V



GD-CI-CC4637V



GD-CI-AP4617V

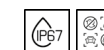


GD-CI-CP4617W



GD-CI-DP4617W

| | Essential | Essential | Essential | Essential | Professional | Professional | Professional |
|-----------------------------|-------------------------------------|-------------------------------------|-------------------------------------|-------------------------------------|-------------------------------------|-------------------------------------|-------------------------------------|
| Video Resolution | 1920 x 1080 | 2560 x 1440 | 2560 x 1440 | 2560 x 1440 | 2688 x 1520 | 2688 x 1520 | 2688 x 1520 |
| Sensitivity Colour | 0.01 Lux @ F2.0 (AGC ON) | 0.01 Lux @ F2.0 (AGC ON) | 0.01 Lux @ F2.0 (AGC ON) | 0.005 Lux @ F1.6 (AGC ON) | 0.005 Lux @ F1.6 (AGC ON) | 0.005 Lux @ F1.6 (AGC ON) | 0.005 Lux @ F1.6 (AGC ON) |
| Lens Focal Length | 2.8 mm | 2.8 mm | 4 mm | 2.8 ~ 12 mm motorized, auto-focus | 2.8 mm | 2.8 mm | 4 mm |
| Col/B&W | IR-cut filter removable (ICR) | IR-cut filter removable (ICR) | IR-cut filter removable (ICR) | IR-cut filter removable (ICR) | IR-cut filter removable (ICR) | IR-cut filter removable (ICR) | IR-cut filter removable (ICR) |
| Wide Dynamic Range | 72 db (Digital Wide Dynamic Range) | 120 dB | 120 dB | 120 dB | 120 dB | 120 dB | 120 dB |
| Image Enhancement | BLC, 3D DNR | BLC, 3D DNR, HLC | BLC, 3D DNR, HLC | BLC, 3D DNR, HLC | BLC, 3D DNR, HLC | BLC, 3D DNR, HLC | BLC, 3D DNR, HLC |
| Max. IR Distance | Up to 30 m | Up to 30 m | Up to 30 m | Up to 30 m | Up to 30 m | Up to 30 m | Up to 30 m |
| Video Compression | H.264, H.264+, H.265, H.265+, MJPEG | H.264, H.264+, H.265, H.265+, MJPEG | H.264, H.264+, H.265, H.265+, MJPEG | H.264, H.264+, H.265, H.265+, MJPEG | H.264, H.264+, H.265, H.265+, MJPEG | H.264, H.264+, H.265, H.265+, MJPEG | H.264, H.264+, H.265, H.265+, MJPEG |
| SD Memory | — | — | — | up to 256G, ANR Function | up to 256G, ANR Function | up to 256G, ANR Function | up to 256G, ANR Function |
| Video Outputs | — | — | — | — | — | — | — |
| Alarm Input/Output | — | — | — | — | yes | yes | yes |
| Audio Input/Output | — | — | — | — | yes | yes | yes |
| Intelligent Video Analytics | MD, VTD | MD, VTD | MD, VTD | MD, VTD | MD, PID, LCD, FD, VTD | MD, PID, LCD, FD, PD & VD, VTD | MD, PID, LCD, FD, PD & VD, VTD |
| Surge Protection | — | — | — | — | TVS 2000V | — | — |
| Operating Temperature | -40 °C ~ 60 °C (-40 °F ~ 140 °F) | -30 °C ~ 60 °C (-22 °F ~ 140 °F) | -30 °C ~ 60 °C (-22 °F ~ 140 °F) | -30 °C ~ 60 °C (-22 °F ~ 140 °F) | -40 °C ~ 60 °C (-40 °F ~ 140 °F) | -30 °C ~ 60 °C (-22 °F ~ 140 °F) | -30 °C ~ 60 °C (-22 °F ~ 140 °F) |
| Supply Voltage | 12 VDC, PoE (IEEE 802.3af) | 12 VDC, PoE (IEEE 802.3af) | 12 VDC, PoE (IEEE 802.3af) | 12 VDC, PoE (IEEE 802.3af) | 12 VDC, PoE (IEEE 802.3af) | 12 VDC, PoE (IEEE 802.3af) | 12 VDC, PoE (IEEE 802.3af) |
| Power Consumption | Max. 6.5 W | Max. 6.5 W | Max. 6.5 W | Max. 11.5 W | Max. 6.5 W | Max. 6.5 W | Max. 6.5 W |





GD-CI-AP2627V

GD-CI-CP4637V

GD-CI-AP6637V

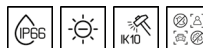
GD-CI-BP8637V

GD-CI-BT4537VH

GD-CI-AT4634V

GD-CI-CT12617F

| | Professional | Professional | Professional | Professional | Premium | Premium | Premium |
|-----------------------------|-------------------------------------|-------------------------------------|---|---|--|--|-------------------------------------|
| Video Resolution | 1920 x 1080 | 2688 x 1520 | 3200 x 1800 | 3840 x 2160 | 2688 x 1520 | 2688 x 1520 | 3504 x 3504 |
| Sensitivity Colour | 0.005 Lux @ F1.2 (AGC ON) | 0.003 Lux @ F1.4 (AGC ON) | 0.001 Lux @ F1.2 (AGC on, shutter speed 1/25 s) | 0.003 Lux @ F1.4 (AGC ON) | 0.0014 Lux @ F1.4 (AGC ON) | 0.001 Lux @ F1.2 (AGC on, shutter speed 1/25 s) | 0.006 Lux |
| Lens Focal Length | 2.8 ~ 12 mm motorized, autofocus | 2.8 ~ 12 mm motorized, autofocus | 2.8 ~ 12 mm motorized, autofocus | 2.8 ~ 12 mm motorized, autofocus | 2.8 ~ 12 mm motorized, autofocus | 2.7 ~ 13.5 mm motorized, autofocus | 1.29 mm |
| Col/B&W | IR-cut filter removable (ICR) | IR-cut filter removable (ICR) | IR-cut filter removable (ICR) | IR-cut filter removable (ICR) | IR-cut filter removable (ICR) | IR-cut filter removable (ICR) | IR-cut filter removable (ICR) |
| Wide Dynamic Range | 120 dB | 120 dB | 120 dB | 120 dB | 140 dB | 130 dB | Digital WDR |
| Image Enhancement | BLC, 3D DNR, HLC | BLC, 3D DNR, HLC, AWB, AGC, AES | BLC, 3D DNR, HLC | BLC, 3D DNR, HLC | BLC, 3D DNR, Defog, HLC | BLC, 3D DNR, Defog, HLC | BLC, 3D DNR, Defog, HLC |
| Max. IR Distance | Up to 30 m | Up to 40 m | Up to 40 m | Up to 40 m | Up to 40 m | Up to 40 m | Up to 15 m |
| Video Compression | H.264, H.264+, H.265, H.265+, MJPEG | H.264, H.264+, H.265, H.265+, MJPEG | H.264, H.264+, H.265, H.265+, MJPEG | H.264, H.264+, H.265, H.265+, MJPEG | H.264, H.264+, H.265, H.265+, MJPEG | H.264, H.264+, H.265, H.265+, MJPEG | H.264, H.264+, H.265, H.265+, MJPEG |
| SD Memory | up to 128G, ANR Function | up to 256G, ANR Function | up to 256G, ANR Function | up to 256G, ANR Function | up to 512G, ANR Function | up to 512G, ANR Function | up to 256G, ANR Function |
| Video Outputs | 1 CVBS Test Monitor output | — | — | 1 CVBS Test Monitor output | — | — | — |
| Alarm Input/Output | yes | yes | yes | yes | yes | yes | yes |
| Audio Input/Output | yes | yes | yes | yes | yes | yes | yes |
| Intelligent Video Analytics | MD, PID, LCD, SOD, FD, VTD | MD, VTD, AD | MD, PID, LCD, FD, PD & VD, VTD | MD, PID, LCD, A-IN, A-OUT, FD, PD & VD, VTD | MD, PID, LCD, A-IN, A-OUT, SOD, FD, PD & VD, VTD | MD, PID, LCD, A-IN, A-OUT, SOD, FD, PD & VD, VTD | MD, PID, LCD, A-IN, A-OUT, SOD, VTD |
| Surge Protection | TVS 2000V | — | — | TVS 2000V | TVS 2000V | TVS 2000V | — |
| Operating Temperature | -40 °C ~ 60 °C (-40 °F ~ 140 °F) | -30 °C ~ 60 °C (-22 °F ~ 140 °F) | -30 °C ~ 60 °C (-22 °F ~ 140 °F) | -30 °C ~ 60 °C (-22 °F ~ 140 °F) | -40 °C ~ 60 °C (-40 °F ~ 140 °F) | -30 °C ~ 60 °C (-22 °F ~ 140 °F) | -40 °C ~ 60 °C (-40 °F ~ 140 °F) |
| Supply Voltage | 12 VDC, PoE (IEEE 802.3af) | 12 VDC, PoE (IEEE 802.3af) | 12 VDC, PoE (IEEE 802.3af) | 12 VDC, PoE (IEEE 802.3af) | 12 VDC, 24 VAC, PoE (IEEE 802.3af) | 12 VDC, 24 VAC, PoE (IEEE 802.3af) | 12 VDC, PoE (IEEE 802.3af) |
| Power Consumption | Max. 11 W | Max. 11 W | Max. 12,5 W | Max. 12,5 W | Max. 12,9 W | Max. 15 W | Max. 10 W |





GD-CI-CC2616T



GD-CI-DC2616T



GD-CI-EC4617T



GD-CI-FC4617T



GD-CI-CC4637T

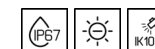


GD-CI-AP2627T



GD-CI-AP4617T

| | Essential | Essential | Essential | Essential | Essential | Professional | Professional |
|-----------------------------|-------------------------------------|-------------------------------------|-------------------------------------|-------------------------------------|-------------------------------------|-------------------------------------|-------------------------------------|
| Video Resolution | 1920 x 1080 | 1920 x 1080 | 2560 x 1440 | 2560 x 1440 | 2560 x 1440 | 1920 x 1080 | 2688 x 1520 |
| Sensitivity Colour | 0.01 Lux @ F2.0 (AGC ON) | 0.01 Lux @ F2.0 (AGC ON) | 0.01 Lux @ F2.0 (AGC ON) | 0.01 Lux @ F2.0 (AGC ON) | 0.005 Lux @ F1.6 (AGC ON) | 0.005 Lux @ F1.2 (AGC ON) | 0.01 Lux @ F1.2 (AGC ON) |
| Lens Focal Length | 2.8 mm | 4 mm | 2.8 mm | 4 mm | 2.8 ~ 12 mm motorized, auto-focus | 2.8 ~ 12 mm motorized, auto-focus | 4 mm |
| Col/B&W | IR-cut filter removable (ICR) | IR-cut filter removable (ICR) | IR-cut filter removable (ICR) | IR-cut filter removable (ICR) | IR-cut filter removable (ICR) | IR-cut filter removable (ICR) | IR-cut filter removable (ICR) |
| Wide Dynamic Range | 72 db (Digital Wide Dynamic Range) | 72 db (Digital Wide Dynamic Range) | 120 dB | 120 dB | 120 dB | 120 dB | 120 dB |
| Image Enhancement | BLC, 3D DNR | BLC, 3D DNR | BLC, 3D DNR, HLC | BLC, 3D DNR, HLC | BLC, 3D DNR, HLC | BLC, 3D DNR, HLC | BLC, 3D DNR, HLC |
| Max. IR Distance | Up to 30 m | Up to 30 m | Up to 30 m | Up to 30 m | Up to 50 m | Up to 50 m | Up to 50 m |
| Video Compression | H.264, H.264+, H.265, H.265+, MJPEG | H.264, H.264+, H.265, H.265+, MJPEG | H.264, H.264+, H.265, H.265+, MJPEG | H.264, H.264+, H.265, H.265+, MJPEG | H.264, H.264+, H.265, H.265+, MJPEG | H.264, H.264+, H.265, H.265+, MJPEG | H.264, H.264+, H.265, H.265+, MJPEG |
| SD Memory | — | — | — | — | up to 256G | up to 128G, ANR Function | up to 128G, ANR Function |
| Video Outputs | — | — | — | — | — | 1 CVBS Test Monitor output | — |
| Alarm Input/Output | — | — | — | — | — | yes | — |
| Audio Input/Output | — | — | — | — | — | yes | — |
| Intelligent Video Analytics | MD, VTD | MD, VTD | MD, VTD | MD, VTD | MD, VTD | MD, PID, LCD, SOD, FD, VTD | MD, PID, LCD, FD, VTD |
| Surge Protection | — | — | — | — | — | TVS 2000V | TVS 2000V |
| Operating Temperature | -40 °C ~ 60 °C (-40 °F ~ 140 °F) | -40 °C ~ 60 °C (-40 °F ~ 140 °F) | -30 °C ~ 60 °C (-22 °F ~ 140 °F) | -30 °C ~ 60 °C (-22 °F ~ 140 °F) | -30 °C ~ 60 °C (-22 °F ~ 140 °F) | -40 °C ~ 60 °C (-40 °F ~ 140 °F) | -30 °C ~ 60 °C (-22 °F ~ 140 °F) |
| Supply Voltage | 12 VDC, PoE (IEEE 802.3af) | 12 VDC, PoE (IEEE 802.3af) | 12 VDC, PoE (IEEE 802.3af) | 12 VDC, PoE (IEEE 802.3af) | 12 VDC, PoE (IEEE 802.3af) | 12 VDC, PoE (IEEE 802.3at) | 12 VDC, PoE (IEEE 802.3af) |
| Power Consumption | Max. 6.5 W | Max. 6.5 W | Max. 6.5 W | Max. 6.5 W | Max. 12,9 W | Max. 17 W | Max. 9.5 W |





GD-CI-AP4637T



GD-CI-AP6637T



GD-CI-BP8637T



GD-CI-CT4537TH

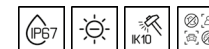


GD-CI-DT4637T



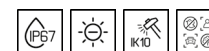
GD-CI-ET4637T

| | Professional | Professional | Professional | Premium | Premium | Premium |
|-----------------------------|---|-------------------------------------|---|--|--|--|
| Video Resolution | 2560 x 1440 | 3200 x 1800 | 3840 x 2160 | 2688 x 1520 | 2688 x 1520 | 2688 x 1520 |
| Sensitivity Colour | 0.003 Lux @ F1.4 (AGC ON) | 0.005 Lux @ F1.6 (AGC ON) | 0.003 Lux @ F1.4 (AGC ON) | 0.0014 Lux @ F1.4 (AGC ON) | 0.0005 Lux @ F1.2 (AGC ON) | 0.0005 Lux @ F1.2 (AGC ON) |
| Lens Focal Length | 2.8 ~ 12 mm motorized, autofocus | 2.8 ~ 12 mm motorized, autofocus | 2.8 ~ 12 mm motorized, autofocus | 2.8 ~ 12 mm motorized, autofocus | 2.8 ~ 12 mm motorized, autofocus | 8 ~ 32 mm motorized, autofocus |
| Col/B&W | IR-cut filter removable (ICR) | IR-cut filter removable (ICR) | IR-cut filter removable (ICR) | IR-cut filter removable (ICR) | IR-cut filter removable (ICR) | IR-cut filter removable (ICR) |
| Wide Dynamic Range | 120 dB | 120 dB | 120 dB | 140 dB | 140 dB | 140 dB |
| Image Enhancement | BLC, 3D DNR, HLC | BLC, 3D DNR, HLC | BLC, 3D DNR, HLC | BLC, 3D DNR, Defog, HLC | BLC, 3D DNR, Defog, EIS, HLC | BLC, 3D DNR, Defog, EIS, HLC |
| Max. IR Distance | Up to 60 m | Up to 60 m | Up to 60 m | Up to 60 m | Up to 50 m | Up to 100 m |
| Video Compression | H.264, H.264+, H.265, H.265+, MJPEG | H.264, H.264+, H.265, H.265+, MJPEG | H.264, H.264+, H.265, H.265+, MJPEG | H.264, H.264+, H.265, H.265+, MJPEG | H.264, H.264+, H.265, H.265+, MJPEG | H.264, H.264+, H.265, H.265+, MJPEG |
| SD Memory | up to 256G, ANR Function | up to 256G, ANR Function | up to 256G, ANR Function | up to 512G, ANR Function | up to 1T, ANR Function | up to 1T, ANR Function |
| Video Outputs | — | — | — | — | 1 CVBS Test Monitor output | 1 CVBS Test Monitor output |
| Alarm Input/Output | yes | yes | yes | yes | yes | yes |
| Audio Input/Output | yes | yes | yes | yes | — | — |
| Intelligent Video Analytics | MD, PID, LCD, A-IN, A-OUT, FD, PD & VD, VTD | MD, PID, LCD, FD, PD & VD, VTD | MD, PID, LCD, A-IN, A-OUT, FD, PD & VD, VTD | MD, PID, LCD, A-IN, A-OUT, SOD, FD, PD & VD, VTD | MD, PID, LCD, A-IN, A-OUT, SOD, FD, VTD, LPR | MD, PID, LCD, A-IN, A-OUT, SOD, FD, VTD, LPR |
| Surge Protection | TVS 2000V | — | TVS 2000V | TVS 2000V | — | — |
| Operating Temperature | -30 °C ~ 60 °C (-22 °F ~ 140 °F) | -30 °C ~ 60 °C (-22 °F ~ 140 °F) | -30 °C ~ 60 °C (-22 °F ~ 140 °F) | -40 °C ~ 60 °C (-40 °F ~ 140 °F) | -40 °C ~ 60 °C (-40 °F ~ 140 °F) | -40 °C ~ 60 °C (-40 °F ~ 140 °F) |
| Supply Voltage | 12 VDC, PoE (IEEE 802.3at) | 12 VDC, PoE (IEEE 802.3at) | 12 VDC, PoE (IEEE 802.3at) | 12 VDC, 24 VAC, PoE (IEEE 802.3at) | 12 VDC, PoE (IEEE 802.3at) | 12 VDC, PoE (IEEE 802.3at) |
| Power Consumption | Max. 15 W | Max. 15 W | Max. 15 W | Max. 18 W | Max. 17 W | Max. 17 W |



**GD-CI-ET4537TH****GD-CI-AT4634T****GD-CI-CT4537T****GD-CI-CT8637T****GD-CI-BT8537TH****GD-CI-AT12637T**

| | Premium | Premium | Premium | Premium | Premium | Premium |
|-----------------------------|--|--|---|-------------------------------------|-------------------------------------|---|
| Video Resolution | 2688 × 1520 | 2688 × 1520 | 2688 × 1520 | 3840 × 2160 | 3840 × 2160 | 4000 × 3000 |
| Sensitivity Colour | 0.0014 Lux @ F1.4 (AGC ON) | 0.001 Lux @ F1.2 (AGC on, shutter speed 1/25 s) | 0.009 Lux @ F1.6 (AGC ON) | 0.002 Lux @ F1.2 (AGC ON) | 0.004 Lux @ F1.2 (AGC ON) | 0.009 Lux @ F1.2 (AGC ON) |
| Lens Focal Length | 8 ~ 32 mm motorized, autofocus | 2.7 ~ 13.5 mm motorized, autofocus | 4.7 ~ 118 mm motorized, autofocus | 8 ~ 32 mm motorized, autofocus | 2.8 ~ 12 mm motorized, autofocus | 8 ~ 32 mm motorized, autofocus |
| Col/B&W | IR-cut filter removable (ICR) | IR-cut filter removable (ICR) | IR-cut filter removable (ICR) | IR-cut filter removable (ICR) | IR-cut filter removable (ICR) | IR-cut filter removable (ICR) |
| Wide Dynamic Range | 140 dB | 130 dB | 140 dB | 120 dB | 120 dB | Digital WDR |
| Image Enhancement | BLC, 3D DNR, Defog, HLC | BLC, 3D DNR, Defog, HLC | BLC, 3D DNR, Defog, EIS, HLC | BLC, 3D DNR, Defog, EIS, HLC | BLC, 3D DNR, HLC | BLC, 3D DNR, Defog, EIS, HLC, Distortion Correction |
| Max. IR Distance | Up to 60 m | Up to 60 m | Up to 200m | Up to 100 m | Up to 60 m | Up to 100 m |
| Video Compression | H.264, H.264+, H.265, H.265+, MJPEG | H.264, H.264+, H.265, H.265+, MJPEG | H.264, H.264+, H.265, H.265+, MJPEG | H.264, H.264+, H.265, H.265+, MJPEG | H.264, H.264+, H.265, H.265+, MJPEG | H.264, H.264+, H.265, H.265+, MJPEG |
| SD Memory | up to 512G, ANR Function | up to 512G, ANR Function | up to 256G, ANR Function | up to 256G, ANR Function | up to 256G, ANR Function | up to 256G, ANR Function |
| Video Outputs | — | — | — | 1 CVBS Test Monitor output | — | 1 CVBS Test Monitor output |
| Alarm Input/Output | yes | yes | yes | yes | yes | yes |
| Audio Input/Output | yes | yes | yes | — | yes | — |
| Intelligent Video Analytics | MD, PID, LCD, A-IN, A-OUT, SOD, FD, PD & VD, VTD | MD, PID, LCD, A-IN, A-OUT, SOD, FD, PD & VD, VTD | MD, PID, LCD, A-IN, A-OUT, FR, VTD, PD & VD, SD, AD | — | MD, PID, LCD, A-IN, A-OUT | MD, PID, PD & VD, FR, QD, CC, AD |
| Surge Protection | TVS 2000V | TVS 2000V | TVS 4000V | — | TVS 2000V | — |
| Operating Temperature | -40 °C ~ 60 °C (-40 °F ~ 140 °F) | -40 °C ~ 60 °C (-40 °F ~ 140 °F) | -40 °C ~ 60 °C (-40 °F ~ 140 °F) | -40 °C ~ 60 °C (-40 °F ~ 140 °F) | -40 °C ~ 60 °C (-40 °F ~ 140 °F) | -40 °C ~ 60 °C (-40 °F ~ 140 °F) |
| Supply Voltage | 12 VDC, 24 VAC, PoE (IEEE 802.3at) | 12 VDC, 24 VAC, PoE (IEEE 802.3at) | 12 VDC, 24 VAC, PoE (IEEE 802.3at) | 12 VDC, PoE (IEEE 802.3at) | 12 VDC, 24 VAC, PoE (IEEE 802.3at) | 12 VDC, PoE (IEEE 802.3at) |
| Power Consumption | Max. 18 W | Max. 15 W | Max. 12 W | Max. 18 W | Max. 15 W | Max. 18 W |





GD-CI-AT30516Q



GD-CI-AT20527Q

| | Premium | Premium |
|-----------------------------|-------------------------------------|---|
| Video Resolution | 8160 x 3616 | 2560 x 1920 |
| Sensitivity Colour | 0.009 Lux @ F1.2 (AGC ON) | 0.006 Lux @ F1.2 (AGC ON) |
| Lens Focal Length | 4 x 3 mm | 4 x movable lenses 2.8 ~ 12 mm motorized, autofocus |
| Col/B&W | IR-cut filter removable (ICR) | IR-cut filter removable (ICR) |
| Wide Dynamic Range | Digital WDR | 120 dB |
| Image Enhancement | BLC, 3D DNR, Defog, EIS, HLC | BLC, 3D DNR, EIS, HLC |
| Max. IR Distance | Up to 20 m | Up to 30 m |
| Video Compression | H.264, H.264+, H.265, H.265+, MJPEG | H.264, H.264+, H.265, H.265+, MJPEG |
| SD Memory | up to 128G, ANR Function | up to 128G, ANR Function |
| Video Outputs | — | — |
| Alarm Input/Output | yes | yes |
| Audio Input/Output | yes | yes |
| Intelligent Video Analytics | PID, LCD, VTD | MD, PID, LCD, A-IN, A-OUT, SOD, FD, VTD, SD |
| Surge Protection | — | — |
| Operating Temperature | -40 °C ~ 60 °C (-40 °F ~ 140 °F) | -30 °C ~ 60 °C (-22 °F ~ 140 °F) |
| Supply Voltage | 24 VAC, PoE+ (IEEE 802.3at) | 12 VDC, 24 VAC, PoE (IEEE 802.3bt) |
| Power Consumption | Max. 25 W | Max. 34 W |



DEWARP

Dewarping is used to equalize an all-around image of a „fisheye camera“. With dewarping, the respectively selected image area is converted for the viewer in the respective dimensions and the selected viewing angle — and thus equalized. You control the view like a pan / tilt camera or you can view the scene in several windows in a panoramic view.

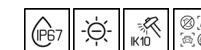
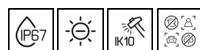
The Dewarp function is also supported from the GRUNDIG NVRs of the Pro-and Premium-series.

GD-CI-BT12617F with Immervision® panomorph optical design outperforms all competing technologies.



**GD-CI-AC4637P****GD-CI-CP2647P****GD-CI-CP2747P****GD-CI-AP4647P****GD-CI-AP4747P****GD-CI-CT4747P****GD-CI-BT4747P****GD-CI-AT8747P**

| | Essential | Professional | Professional | Professional | Professional | Premium | Premium | Premium |
|-------------------------|----------------------------------|---|--|--|--|---|--|---|
| Image Sensor | 1/2.8" progressive Scan CMOS | 1/2.8" progressive Scan CMOS | 1/2.8" progressive Scan CMOS | 1/2.8" progressive Scan CMOS | 1/1.8" progressive Scan CMOS | 1/1.8" progressive Scan CMOS | 1/1.8" progressive Scan CMOS | 1/1.8" progressive Scan CMOS |
| Video Resolution | 2560 x 1440 | 1920 x 1080 | 1920 x 1080 | 2560 x 1440 | 2560 x 1440 | 2560 x 1440 | 2688 x 1520 | 3840 x 2160 |
| Sensitivity Colour | 0.005 Lux @ F1.5 (AGC ON) | 0.005 Lux @ F1.6 (AGC ON) | 0.005 Lux @ F1.6 (AGC ON) | 0.005 Lux @ F1.6 (AGC ON) | 0.005 Lux @ F1.5 (AGC ON) | 0.001 Lux @ F1.2 (AGC ON) | 0.001 Lux @ F1.2 (AGC ON) | 0.005 Lux |
| Lens Focal Length | 2.8 ~ 12 mm motorized, autofocus | 4.8 ~ 120 mm motorized, autofocus | 4.8 ~ 153 mm motorized, autofocus | 4.8 ~ 120 mm motorized, autofocus | 5.9 ~ 188.8 mm motorized, autofocus | 6.0 ~ 252 mm, 42x Optical Zoom | 6.0 ~ 252 mm, 42x Optical Zoom | 6.0 ~ 252 mm, 42x Optical Zoom |
| Optical Zoom Ratio | 4x | 25x | 32x | 25x | 32x | 42x | 42x | 42x |
| Col/B&W | Removable IR-Cut Filter (ICR) | Removable IR-Cut Filter (ICR) | Removable IR-Cut Filter (ICR) | Removable IR-Cut Filter (ICR) | Removable IR-Cut Filter (ICR) | Removable IR-Cut Filter (ICR) | Removable IR-Cut Filter (ICR) | Removable IR-Cut Filter (ICR) |
| Number of Privacy Zones | 24 programmable zones | 24 programmable zones | 24 programmable zones | 24 programmable zones | 24 programmable zones | 24 programmable zones | 24 programmable zones | 24 programmable zones |
| Image Enhancement | BLC, 3D DNR, Defog, HLC | BLC, 3D DNR, Defog, HLC, AGC, Regional Exposure, Regional Focus | BLC, 3D DNR, Defog, EIS, HLC, AGC, Regional Exposure, Regional Focus | BLC, 3D DNR, Defog, EIS, HLC, AGC, Regional Exposure, Regional Focus | BLC, 3D DNR, Defog, EIS, HLC, AGC, Regional Exposure, Regional Focus | BLC, 3D DNR, Defog, EIS, HLC, AGC, Regional Exposure, Regional Focus, Rapid Focus | BLC, 3D DNR, Defog, EIS, HLC, AGC, Regional Exposure, Regional Focus | BLC, 3D DNR, Defog, EIS, HLC, AGC, Regional Exposure, Regional Focus, Rapid Focus |
| Max. IR Distance | Up to 20 m | Up to 50 m | Up to 200m | Up to 100 m | Up to 200m | Up to 400m | Up to 400m | Up to 500m |
| SD Memory | up to 256G, ANR Function | up to 256G, ANR Function | up to 256G, ANR Function | up to 256G, ANR Function | up to 256G, ANR Function | up to 256G, ANR Function | up to 256G, ANR Function | up to 256G, ANR Function |
| Video Outputs | — | — | — | — | — | 1x CVBS (1 Vcc) BNC | 1x CVBS (1 Vcc) BNC | 1x CVBS (1 Vcc) BNC |
| Alarm Input/Output | — | yes | yes | yes | yes | yes | yes | yes |
| Audio Input/Output | yes | yes | yes | yes | yes | yes | yes | yes |
| Surge Protection | TVS 4000V | TVS 6000V | TVS 6000V | TVS 6000V | TVS 6000V | TVS 6000V | TVS 6000V | TVS 6000V |
| Operating Temperature | -20 °C ~ 60 °C (-4 °F ~ 140 °F) | -30 °C ~ +65 °C (-22 °F ~ 149 °F) | -40 °C ~ 65 °C (-40 °F ~ 149 °F) | -30 °C ~ +65 °C (-22 °F ~ 149 °F) | -30 °C ~ +65 °C (-22 °F ~ 149 °F) | -40 °C ~ 70 °C (-40 °F ~ 158 °F) | -40 °C ~ 70 °C (-40 °F ~ 158 °F) | -40 °C ~ 70 °C (-40 °F ~ 158 °F) |
| Supply Voltage | 12 VDC, PoE (IEEE 802.3af) | 12 VDC, PoE (IEEE 802.3at) | 24 VAC, Hi-PoE (IEEE 802.3bt) | 12 VDC, PoE (IEEE 802.3at) | 24 VAC, Hi-PoE (IEEE 802.3bt) | 24 VAC, Hi-PoE (IEEE 802.3bt) | 24 VAC, Hi-PoE (IEEE 802.3bt) | 24 VAC, Hi-PoE (IEEE 802.3bt) |
| Power Consumption | Max. 12 W | Max. 24 W | Max. 42 W | Max. 18 W | Max. 42 W | Max. 60W | Max. 60W | Max. 60W |
| Power Consumption | Max. 12 W | Max. 18 W | Max. 42 W | Max. 18 W | Max. 42 W | Max. 60W | Max. 60W | Max. 60W |





GD-TI-AP1614V

GD-TI-BP1603V

GD-TI-BP1603T

GD-TI-BP1606T

GD-TI-BP1610T

GD-TI-AP4503T

GD-TI-AP4507T

| | Professional | Professional | Professional | Professional | Professional | Professional | Professional |
|-----------------------------|---|---|---|---|---|---|---|
| Thermal Sensor | Vanadium Oxide Uncooled Focal Plane Array | Vanadium Oxide Uncooled Focal Plane Array | Vanadium Oxide Uncooled Focal Plane Array | Vanadium Oxide Uncooled Focal Plane Array | Vanadium Oxide Uncooled Focal Plane Array | Vanadium Oxide Uncooled Focal Plane Array | Vanadium Oxide Uncooled Focal Plane Array |
| Resolution (Thermal) | 160 x 120 | 160 x 120 | 160 x 120 | 160 x 120 | 160 x 120 | 256 x 192 | 256 x 192 |
| NETD | < 40 mk (@25° C, F=1.0) | < 40 mk (@25° C, F=1.0) | < 40 mk (@25° C, F=1.0) | < 40 mk (@25° C, F=1.0) | < 40 mk (@25° C, F=1.0) | < 40 mk (@25° C, F=1.0) | < 40 mk (@25° C, F=1.0) |
| Viewing Angle (IR) | 90° x 66.4° (HxV) | 50° x 37.2° (HxV) | 50° x 37.2° (HxV) | 25° x 18.7° (HxV) | 15.96° x 12° (HxV) | 50° x 37.2° (HxV) | 24.5° x 18.5° (HxV) |
| Detector Pitch | 17 µm | 17 µm | 17 µm | 17 µm | 17 µm | 12 µm | 12 µm |
| Image Sensor | 1/2.7" progressive Scan CMOS | 1/2.7" progressive Scan CMOS | 1/2.7" progressive Scan CMOS | 1/2.7" progressive Scan CMOS | 1/2.7" progressive Scan CMOS | 1/2.7" progressive Scan CMOS | 1/2.7" progressive Scan CMOS |
| Video Resolution | 2688 x 1520 | 2688 x 1520 | 2688 x 1520 | 2688 x 1520 | 2688 x 1520 | 2688 x 1520 | 2688 x 1520 |
| Sensitivity Colour | 0.0176 Lux @ F2.25 (AGC ON) | 0.0176 Lux @ F2.25 (AGC ON) | 0.0176 Lux @ F2.25 (AGC ON) | 0.0176 Lux @ F2.25 (AGC ON) | 0.0176 Lux @ F2.25 (AGC ON) | 0.0089Lux @ F1.6 (AGC ON) | 0.0089Lux @ F1.6 (AGC ON) |
| Lens Focal Length | 2.1 mm | 4 mm | 4 mm | 8 mm | 8 mm | 4.3 mm | 6.4 mm |
| Video Compression | H.264, H.265, MJPEG | H.264, H.265, MJPEG | H.264, H.265, MJPEG | H.264, H.265, MJPEG | H.264, H.265, MJPEG | H.264, H.265, MJPEG | H.264, H.265, MJPEG |
| Accuracy | ± 8°C | ± 8°C | ± 8°C | ± 8°C | ± 8°C | ± 8°C | ± 8°C |
| Measurement option | Support 3 temperature measurement rule types, 21 rules (10 points, 10 regions and 1 line) | Support 3 temperature measurement rule types, 21 rules (10 points, 10 regions and 1 line) | Support 3 temperature measurement rule types, 21 rules (10 points, 10 regions and 1 line) | Support 3 temperature measurement rule types, 21 rules (10 points, 10 regions and 1 line) | Support 3 temperature measurement rule types, 21 rules (10 points, 10 regions and 1 line) | Support 3 temperature measurement rule types, 21 rules (10 points, 10 regions and 1 line) | Support 3 temperature measurement rule types, 21 rules (10 points, 10 regions and 1 line) |
| Intelligent Video Analytics | PID, LCD, A-IN, A-OUT, PD & VD, Smoke | PID, LCD, A-IN, A-OUT, PD & VD, Smoke | PID, LCD, A-IN, A-OUT, PD & VD, Smoke | PID, LCD, A-IN, A-OUT, PD & VD, Smoke | PID, LCD, A-IN, A-OUT, PD & VD, Smoke | PID, LCD, A-IN, A-OUT, PD & VD, Smoke | PID, LCD, A-IN, A-OUT, PD & VD, Smoke |
| Operating Temperature | -40 °C ~ 65 °C (-40 °F ~ 149 °F) | -40 °C ~ 65 °C (-40 °F ~ 149 °F) | -40 °C ~ 65 °C (-40 °F ~ 149 °F) | -40 °C ~ 65 °C (-40 °F ~ 149 °F) | -40 °C ~ 65 °C (-40 °F ~ 149 °F) | -40 °C ~ 65 °C (-40 °F ~ 149 °F) | -40 °C ~ 65 °C (-40 °F ~ 149 °F) |
| Supply Voltage | 12 VDC, PoE (IEEE 802.3af) | 12 VDC, PoE (IEEE 802.3af) | 12 VDC, PoE (IEEE 802.3af) | 12 VDC, PoE (IEEE 802.3af) | 12 VDC, PoE (IEEE 802.3af) | 12 VDC, 24 VAC, PoE (IEEE 802.3af) | 12 VDC, 24 VAC, PoE (IEEE 802.3af) |
| Power Consumption | Max. 6 W | Max. 6 W | Max. 6.5 W | Max. 6.5 W | Max. 6.5 W | Max. 8.2 W | Max. 8.2 W |



**GD-TI-AP4510T****GD-TI-AT2604T****GD-TI-AT2607T****GD-TI-AT2610T****GD-TI-CT2510T****GD-TI-AT3607T****GD-TI-AT3625T**

| | Professional | Premium | Premium | Premium | Premium | Premium | Premium |
|-----------------------------|---|---|---|---|---|---|---|
| Thermal Sensor | Vanadium Oxide Uncooled Focal Plane Array | Vanadium Oxide Uncooled Focal Plane Array | Vanadium Oxide Uncooled Focal Plane Array | Vanadium Oxide Uncooled Focal Plane Array | Vanadium Oxide Uncooled Focal Plane Array | Vanadium Oxide Uncooled Focal Plane Array | Vanadium Oxide Uncooled Focal Plane Array |
| Resolution (Thermal) | 256 x 192 | 384 x 288 | 384 x 288 | 384 x 288 | 384 x 288 | 640 x 512 | 640 x 512 |
| NETD | < 40 mk (@25° C, F=1.0) | < 35 mk (@25° C, F=1.0) | < 35 mk (@25° C, F=1.0) | < 35 mk (@25° C, F=1.0) | < 35 mk (@25° C, F=1.0) | < 35 mk (@25° C, F=1.0) | < 35 mk (@25° C, F=1.0) |
| Viewing Angle (IR) | 18° x 13.5° (HxV) | 60° x 44.1° (HxV) | 42° x 32° (HxV) | 26° x 20° (HxV) | 37.5° x 28.5° (HxV) | 88,5° x 73,2° (HxV) | 24.5° x 18.5° (HxV) |
| Detector Pitch | 12 µm | 12 µm | 12 µm | 12 µm | 17 µm | 17 µm | 17 µm |
| Image Sensor | 1/2.7" progressive Scan CMOS | — | — | — | 1/2.7" progressive Scan CMOS | — | — |
| Video Resolution | 2688 x 1520 | — | — | — | 2688 x 1520 | — | — |
| Sensitivity Colour | 0.0089Lux @ F1.6 (AGC ON) | — | — | — | 0.0089Lux @ F1.6 (AGC ON) | — | — |
| Lens Focal Length | 8 mm | — | — | — | 4 mm | — | — |
| Video Compression | H.264, H.265, MJPEG | H.264, H.265, MJPEG | H.264, H.265, MJPEG | H.264, H.265, MJPEG | H.264, H.265, MJPEG | H.264, H.265, MJPEG | H.264, H.265, MJPEG |
| Accuracy | ± 8°C | ± 8°C | ± 8°C | ± 8°C | ± 8°C | ± 8°C | ± 8°C |
| Measurement option | Support 3 temperature measurement rule types, 21 rules (10 points, 10 regions and 1 line) | Support 3 temperature measurement rule types, 21 rules (10 points, 10 regions and 1 line) | Support 3 temperature measurement rule types, 21 rules (10 points, 10 regions and 1 line) | Support 3 temperature measurement rule types, 21 rules (10 points, 10 regions and 1 line) | Support 3 temperature measurement rule types, 21 rules (10 points, 10 regions and 1 line) | Support 3 temperature measurement rule types, 21 rules (10 points, 10 regions and 1 line) | Support 3 temperature measurement rule types, 21 rules (10 points, 10 regions and 1 line) |
| Intelligent Video Analytics | PID, LCD, A-IN, A-OUT, PD & VD, Smoke | PID, LCD, A-IN, A-OUT, PD & VD, Smoke | PID, LCD, A-IN, A-OUT, PD & VD, Smoke | PID, LCD, A-IN, A-OUT, PD & VD, Smoke | PID, LCD, A-IN, A-OUT, PD & VD, Smoke | PID, LCD, A-IN, A-OUT, PD & VD, Smoke | PID, LCD, A-IN, A-OUT, PD & VD, Smoke |
| Operating Temperature | -40 °C ~ 65 °C (-40 °F ~ 149 °F) | -40 °C ~ 65 °C (-40 °F ~ 149 °F) | -40 °C ~ 65 °C (-40 °F ~ 149 °F) | -40 °C ~ 65 °C (-40 °F ~ 149 °F) | -40 °C ~ 65 °C (-40 °F ~ 149 °F) | -40 °C ~ 65 °C (-40 °F ~ 149 °F) | -40 °C ~ 65 °C (-40 °F ~ 149 °F) |
| Supply Voltage | 12 VDC, 24 VAC, PoE (IEEE 802.3af) | 12 VDC, 24 VAC, PoE (IEEE 802.3af) | 12 VDC, 24 VAC, PoE (IEEE 802.3af) | 12 VDC, 24 VAC, PoE (IEEE 802.3af) | 12 VDC, 24 VAC, PoE (IEEE 802.3af) | 12 VDC, PoE (IEEE 802.3af) | 12 VDC, PoE (IEEE 802.3af) |
| Power Consumption | Max. 8.2 W | Max. 5.5 W | Max. 5 W | Max. 5.5 W | Max. 9.5 W | Max. 5 W | Max. 5 W |





GD-RN-BC2004P

GD-RN-BC2416N

GD-RN-BC2416P

GD-RN-BP8616P

GD-RN-BP8632N

| | Essential | Essential | Essential | Professional | Professional |
|---------------------------------|---|---|---|---|---|
| Recorders IP Standalone NVR | 4 channels | 16 channels | 16 channels | 16 channels | 32 channels |
| Recording Bandwidth | max. 40 Mbps | 160 Mbps | 160 Mbps | 160 Mbps | 256 Mbps |
| Outgoing Bandwidth | 80 Mbps | max. 160 Mbps | max. 160 Mbps | 256 Mbps | 256 Mbps |
| Recording Resolution | Max. 12 MP | Max. 12 MP | Max. 12 MP | Max. 32 MP | Max. 32 MP |
| Video Compression | H.264, H.264+, H.265, H.265+ | H.264, H.264+, H.265, H.265+ | H.264, H.264+, H.265, H.265+ | H.264, H.264+, H.265, H.265+ | H.264, H.264+, H.265, H.265+ |
| Recording Mode | Continuous, Event Alarm, Motion, Video Loss, Schedule | Continuous, Event Alarm, Motion, Video Loss, Schedule | Continuous, Event Alarm, Motion, Video Loss, Schedule | Continuous, Event Alarm, Motion, Video Loss, Schedule | Continuous, Event Alarm, Motion, Video Loss, Schedule |
| Search Mode | Date, Time, Event Alarm, Motion, Search Backup | Date, Time, Event Alarm, Motion, Search Backup | Date, Time, Event Alarm, Motion, Search Backup | Date, Time, Event Alarm, Motion, Search Backup | Date, Time, Event Alarm, Motion, Search Backup |
| External Backup | USB HDD, USB Memory, DVD-R, Network | USB HDD, USB Memory, DVD-R, Network | USB HDD, USB Memory, DVD-R, Network | USB HDD, USB Memory, USB DVD-R, Network | USB HDD, USB Memory, USB DVD-R, Network |
| HDMI Output | 4K (3840x2160) | 4K (3840x2160) | 4K (3840x2160) | 4K (3840x2160) | 4K (3840x2160) |
| Harddisk bay | 1 x SATA III | 2 x SATA | 2 x SATA | 4 x SATA III, 1 x eSATA | 4 x SATA III, 1 x eSATA |
| Max. Storage Capacity | Up to 10TB capacity for each HDD (not mandatory) | Up to 10TB capacity for each HDD | Up to 10TB capacity for each HDD | Up to 10TB capacity for each HDD, max 40TB in total | Up to 10TB capacity for each HDD, max 40TB in total |
| Disk Array type | — | — | — | 1-ch, RCA (2.0 Vp-p, 1kΩ) | 1-ch, RCA (2.0 Vp-p, 1kΩ) |
| Audio Inputs | — | 4 contact input N/O or N/C | 4 contact input N/O or N/C | 16 contact input N/O or N/C | 16 contact input N/O or N/C |
| Alarm Inputs | — | 1 | 1 | 9 | 9 |
| Alarm Outputs | 4 independent 10, 100 Mbps PoE Ethernet interfaces | — | 16 independent 10, 100 Mbps PoE Ethernet interfaces | 16 independent 10, 100 Mbps PoE Ethernet interfaces | — |
| Power over Ethernet | — | — | — | 19-inch rack-mounted, 1.5U | 19-inch rack-mounted, 1.5U |
| Chassis | 48 VDC, Power Adapter 100 ~ 240 VAC 50, 60Hz included | 100 ~ 240 VAC, 50Hz / 60Hz | 100 ~ 240 VAC, 50Hz / 60Hz | 100 ~ 240 VAC, 50Hz / 60Hz | 100 ~ 240 VAC, 50Hz / 60Hz |
| Supply Voltage | ≤ 10 W without harddisk and PoE off | ≤ 15 W without harddisk | ≤ 15 W without harddisk and PoE off | ≤ 30W without hard disks | ≤ 30W without hard disks |





GD-RN-CT8832N

GD-RN-AT819128N

| | Premium | Premium |
|---------------------------------|---|---|
| Recorders IP Standalone NVR | 32 channels | 128 channels |
| Recording Bandwidth | 320Mbps or 200Mbps (when RAID is enabled) | 576 Mbps |
| Outgoing Bandwidth | 256 Mbps or 200 Mbp (when RAID is enabled) | 512 Mbps |
| Recording Resolution | Max. 12 MP | Max. 12 MP |
| Video Compression | H.264, H.264+, H.265, H.265+, MPEG4 | H.264, H.264+, H.265, H.265+, MPEG4 |
| Recording Mode | Continuous, Event Alarm, Motion, Video Loss, Schedule | Continuous, Event Alarm, Motion, Video Loss, Schedule |
| Search Mode | Date, Time, Event Alarm, Motion, Search Backup | Date, Time, Event Alarm, Motion, Search Backup |
| External Backup | USB HDD, USB Memory, USB DVD-R, Network | USB HDD, USB Memory, USB DVD-R, Network |
| HDMI Output | HDMI1: 4K (3840 × 2160) HDMI2: 1920 × 1080p | HDMI1: 4K (3840 × 2160) HDMI2: 1920 × 1080p |
| Harddisk bay | 8 x SATA III | 16 x SATA III, 1 x e-SATA |
| Max. Storage Capacity | Up to 10TB capacity for each HDD | Up to 10TB capacity for each HDD |
| Disk Array type | 1-ch, RCA (2.0 Vp-p, 1kΩ) | 1-ch, RCA (2.0 Vp-p, 1kΩ) |
| Audio Inputs | 16 contact input N/O or N/C | 16 contact input N/O or N/C |
| Alarm Inputs | 4 | 8 |
| Alarm Outputs | — | — |
| Power over Ethernet | 19-inch rack-mounted, 2U | 19-inch rack-mounted, 3U |
| Chassis | 2 x 100 ~ 240 VAC, 50Hz / 60Hz redundant power supply | 2 x 100 ~ 240 VAC, 50Hz / 60Hz redundant power supply |
| Supply Voltage | Max. 550 W, 30W without harddisk | Max. 500 W, 140 W without harddisk |

GRUNDIG ANALYTICS

Embedded video analytics and intelligence can greatly improve the efficiency of your security personnel and offer insights to improve operations.

Protect your premises and gain business intelligence into traffic patterns and trends. Count objects, cars or people entering and exiting a specific area to determine the proper staffing needed during peak traffic times. Automatically monitor areas where no objects or people are to be present and alert for instant action to be taken.



Scan QR Code
for video example

Line Crossing Detection. Cross a pre-defined virtual line.

Intrusion Detection. Enter and loiter in a pre-defined virtual region.

Region Entrance. Enter a pre-defined virtual region from the outside place.

Region Exiting. Exit from a pre-defined virtual region.

Object (People) Counting.

Unattended Baggage and Object Removal. Objects left over in the pre-defined region such as the baggage, purse, dangerous materials. Video verification and real-time alerts when objects have been placed or removed from a field of view.

Heat Map. Graphical representation of density of visit in a configured area. Easily identify traffic patterns and trends to improve product placement, promotional graphics and staffing.

Face Detection. Human face appears in the image can be detected and trigger linkage method.



GD-RX-AP1416R

GD-RX-AP2424R

GD-RX-AP2432R

GD-RX-AP3448R

GD-RX-AP2446R

GD-RX-AP2496R

| | Professional | Professional | Professional | Professional | Professional | Professional |
|--------------------------|--|--|--|--|---|---|
| Number of cameras | 16 channel (extendable with CAM licences) | 24 channel (extendable with CAM licences) | 32 channel (extendable with CAM licences) | 48 channel (extendable with CAM licences) | 64 channel (extendable with CAM licences) | 96 channel (extendable with CAM licences) |
| Operating System | Microsoft® Windows 11 Pro 64-bit | Microsoft® Windows 11 Pro 64-bit | Microsoft® Windows 11 Pro 64-bit | Microsoft® Windows 11 Pro 64-bit | Microsoft® Windows 11 Pro 64-bit | Microsoft® Windows 11 Pro 64-bit |
| CPU | Intel® Core™ i5-10400, 6 Cores, 12 Threads, 12 MB Cache, 2.90 GHz Base Frequency, 4.30 GHz Turbo Frequency | Intel® Core™ i5-10400, 6 Cores, 12 Threads, 12 MB Cache, 2.90 GHz Base Frequency, 4.30 GHz Turbo Frequency | Intel® Core™ i5-10400, 6 Cores, 12 Threads, 12 MB Cache, 2.90 GHz Base Frequency, 4.30 GHz Turbo Frequency | Intel® Core™ i5-10400, 6 Cores, 12 Threads, 12 MB Cache, 2.90 GHz Base Frequency, 4.30 GHz Turbo Frequency | Intel® Core™ i5-13400, 10 Cores, 16 Threads, 20 MB Cache, 2.50 GHz Base Frequency, 4.60 GHz Turbo Frequency | Intel® Core™ i5-13400, 10 Cores, 16 Threads, 20 MB Cache, 2.50 GHz Base Frequency, 4.60 GHz Turbo Frequency |
| Video Compression | H.264, H.264+, H.265, H.265+ , MJPEG | H.264, H.264+, H.265, H.265+ , MJPEG | H.264, H.264+, H.265, H.265+ , MJPEG | H.264, H.264+, H.265, H.265+ , MJPEG | H.264, H.264+, H.265, H.265+ , MJPEG | H.264, H.264+, H.265, H.265+ , MJPEG |
| Harddisk bay | 6x SATA | 6x SATA | 6x SATA | 6x SATA | 6x SATA | 6x SATA |
| Supply Voltage | 100 ~ 240 VAC, 50Hz / 60Hz | 100 ~ 240 VAC, 50Hz / 60Hz | 100 ~ 240 VAC, 50Hz / 60Hz | 100 ~ 240 VAC, 50Hz / 60Hz | 100 ~ 240 VAC, 50Hz / 60Hz | 100 ~ 240 VAC, 50Hz / 60Hz |
| Power Consumption | Max. 400 W | Max. 400 W | Max. 400 W | Max. 400 W | Max. 400 W | Max. 400 W |

The GRUNDIG Security Video Management System powered by C-WERK is the advanced solution for video security systems in virtually all areas of application. C-WERK sets new standards, especially with its simple and user-friendly operation. Regardless of the requirements, C-WERK can cope effectively with almost any challenge: with logical, systematic, and especially user-friendly implementation. The C-WERK platform is completely scalable and modular, and it features open system architecture. The simple license model enables individual solutions: you'll only pay for what you need.

The GRUNDIG VMS powered by C-WERK is based on an end-to-end concept with a unified software solution throughout: ranging from IP camera / recorder freeware to a video management solution for extensive, complex video facilities.

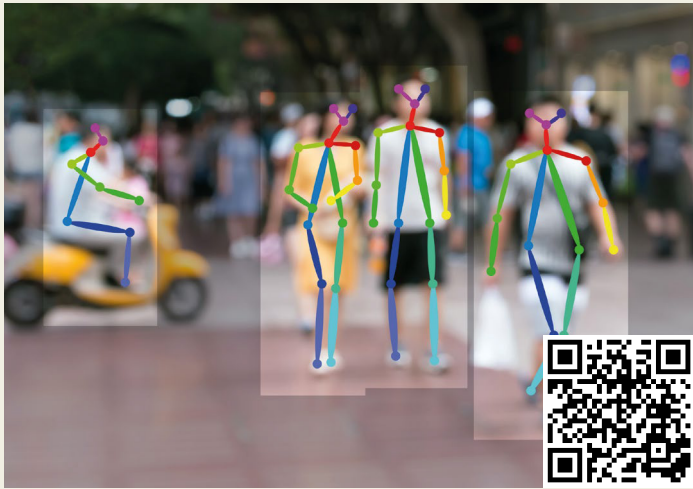
Scan the QR codes to start videos.

For more information please check www.c-werk.com



TIME LAPSE

Time Lapse is a tool that allows the user to display all moving actions of a predetermined period in a single video. This significantly reduces the effort of finding a particular scene.



BEHAVIOUR ANALYTICS

The intelligent Behaviour Analytics of C-WERK recognizes potentially dangerous situations by detecting specific human postures. The software identifies the positions of the body parts to detect the pose. This will improve the security for example schools, airports, banks, commercial spaces, or office buildings.

SOME IMPORTANT FEATURES OF C-WERK VIDEO MANAGEMENT SOLUTIONS

Forensic Search is an impressive tool that searches for certain scenes or objects about self-determined properties such as object size, color, speed and direction. It is also possible to search specifically for people or vehicles.



SIMILARITY SEARCH

The analysis function extracts human attributes such as colour and type of clothing, shoes and headwear, and stores them in a database. Search results display people with similar attributes (e.g. red shirt) from the video footage of several cameras and from archived material.



FACE SEARCH



Face Search allows recognizing and identifying faces. In addition, it is possible to compare the recognized face with an already existing photo to carry out further automated actions.

LPR SEARCH



License Plate Recognition allows system operators to identify, track and analyse vehicles at entry and exit points. Automatically capture license plates in both, stop & go and moving traffic to review later or automatically open barriers or denies access removing the need of a dedicated LPR operator.

PROFESSIONAL

The professional solution covering most applications for advanced video systems

PREMIUM

Designed for comprehensive solutions with special, unique performance characteristics

ULTRA

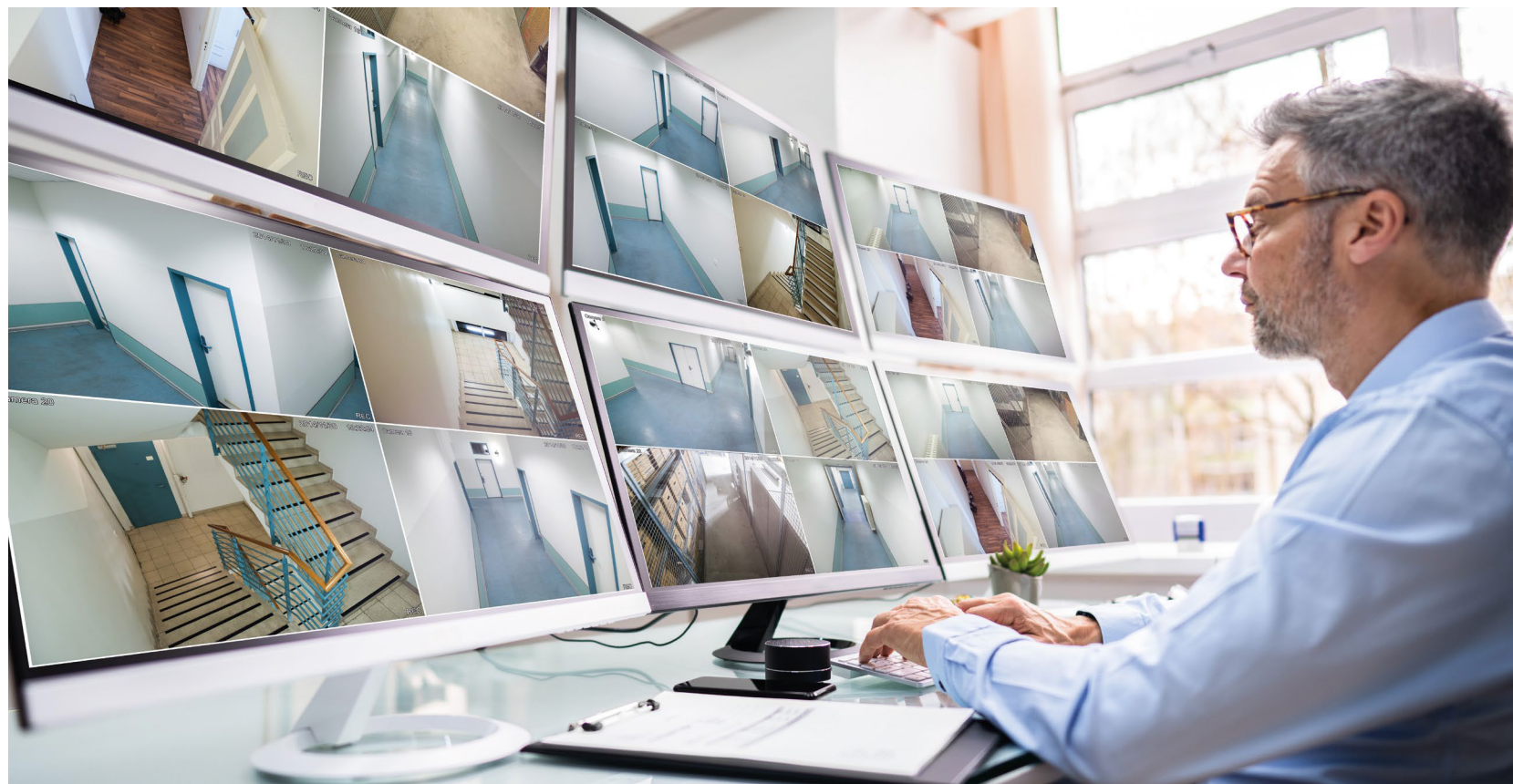
The large scale solution for an unlimited number of server connections, includes offline analytics

Open Platform VMS by C-WERK

C-WERK is best-in-class, new-generation Video Management Software that is based on open standards to offer a truly open platform. C-WERK's reliability, performance, and convenience are unmatched on the market. Experience unprecedented flexibility and freedom of configuration: unlimited number of video servers, video cameras, workstations and mobile client devices, and more than 10.000 IP devices are all supported. Thanks to the program's application programming interface (API), C-WERK allows easily integrating third-party hardware to extend your video system's functionality yet further. The advanced ergonomic interface makes all functions intuitively easy to use and find. A transparent customer-oriented pricing policy means that you can take advantage of the program's full functionality, no matter the size of your system.

C-WERK Highlights

- Unlimited number of cameras, servers and remote clients
- Support for more than 10.000 IP devices
- Advanced video analytics with AI detection
- Unique tools for fast video footage retrieval
- Flat pricing — easy to budget and save
- Zero maintenance fees
- Similarity search function
- Free viewer software with C-WERK VIEWER



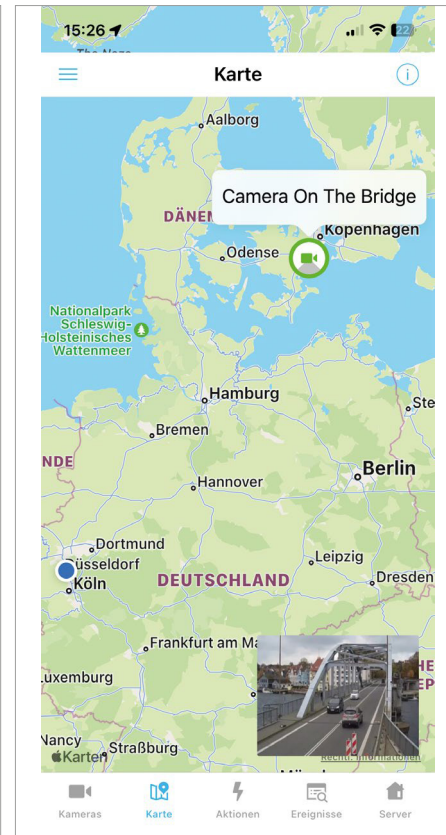
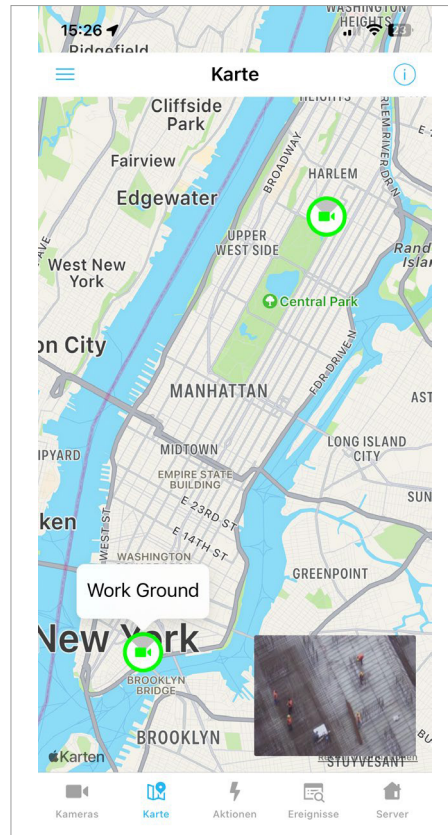
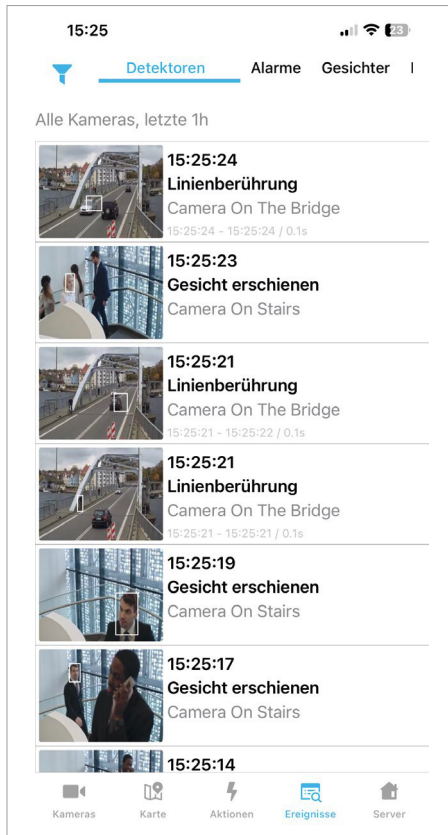


C-WERK mobile App

The client App allows connecting to C-WERK Servers from mobile devices. The App supports receiving live video & audio from cameras, playback of recorded videos, controlling PTZ-cameras, receiving push notifications about events in the system and many more functions.



The C-WERK App is available for iOS and Android.



C-WERK Cloud

C-WERK Cloud is a service by Grundig enabling you to:

- Securely connect to the Web Server
- Store and activate licenses
- Send E-Mails letting you know when a macro is triggered
- View & export recordings from edge devices
- Send push messages to clients

C-WERK Licenses

| ITEM CODE | DESCRIPTION | PRODUCT LINE |
|---------------------------|---|--------------|
| Camera License | | |
| GD-CW-AP-CAM | C-WERK Pro Single-Channel Camera License | PROFESSIONAL |
| GD-CW-AT-CAM | C-WERK Premium Single-Channel Camera License | PREMIUM |
| GD-CW-AU-CAM | C-WERK Ultra Single-Channel Camera License | ULTRA |
| Extension License | | |
| GD-CW-AP-SRC | C-WERK Pro Source License | PROFESSIONAL |
| GD-CW-AT-SRC | C-WERK Premium Source License | PREMIUM |
| GD-CW-AU-SRC | C-WERK Ultra Source License | ULTRA |
| GD-CW-AP-IFS | C-WERK Pro Forensic Search License | PROFESSIONAL |
| Upgrade | | |
| GD-CW-AP-CAM-PLUS | C-WERK Essential to Professional Camera License Upgrade | PROFESSIONAL |
| GD-CW-AT-CAM-PLUS | C-WERK Professional to Premium Camera License Upgrade | PREMIUM |
| GD-CW-AU-CAM-PLUS | C-WERK Premium to Ultra Camera License Upgrade | ULTRA |
| Additional modules | | |
| GD-CW-AP-LPS | C-WERK Pro License Realtime License Plate Recognition slow | PROFESSIONAL |
| GD-CW-AP-LPF | C-WERK Pro License Realtime License Plate Recognition fast | PROFESSIONAL |
| GD-CW-AP-FRT | C-WERK Pro License Realtime Face Recognition for 1 Video Channel | PROFESSIONAL |
| GD-CW-AP-FRT10 | C-WERK Pro License Realtime Face Recognition for 10 Video Channels | PROFESSIONAL |
| GD-CW-AP-HBA | C-WERK Pro License Realtime Behavior Analytics | PROFESSIONAL |
| GD-CW-AP-PPE | C-WERK Pro License Personal Protective Equipment Recognition for 1 Camera | PROFESSIONAL |
| GD-CW-AP-WLDE | C-WERK Pro License Water Level Recognition for 1 Camera | PROFESSIONAL |

| ITEM CODE | DESCRIPTION | PRODUCT LINE |
|----------------|--|--------------|
| GD-CW-AT-LPS | C-WERK Premium License Realtime License Plate Recognition slow | PREMIUM |
| GD-CW-AT-LPF | C-WERK Premium License Realtime License Plate Recognition fast | PREMIUM |
| GD-CW-AT-FRT | C-WERK Premium License Realtime Face Recognition for 1 Video Channel | PREMIUM |
| GD-CW-AT-FRT10 | C-WERK Premium License Realtime Face Recognition for 10 Video Channels | PREMIUM |
| GD-CW-AT-HBA | C-WERK Premium License Realtime Behavior Analytics | PREMIUM |
| GD-CW-AT-PPE | C-WERK Premium License Personal Protective Equipment Recognition | PREMIUM |
| GD-CW-AT-WLD | C-WERK Premium License Water Level Recognition for 1 Camera | PREMIUM |
| GD-CW-AT-SIM | C-WERK Premium License Similarity Search for 1 Camera | PREMIUM |
| GD-CW-AT-OFS | C-WERK Premium Offline Forensic Search License | PREMIUM |
| GD-CW-AU-LPS | C-WERK Ultra License Realtime License Plate Recognition slow | ULTRA |
| GD-CW-AU-LPF | C-WERK Ultra License Realtime License Plate Recognition fast | ULTRA |
| GD-CW-AU-FRT | C-WERK Ultra License Realtime Face Recognition for 1 Video Channel | ULTRA |
| GD-CW-AU-FRT10 | C-WERK Ultra License Realtime Face Recognition for 10 Video Channels | ULTRA |
| GD-CW-AU-HBA | C-WERK Ultra License Realtime Behavior Analytics | ULTRA |
| GD-CW-AU-PPE | C-WERK Ultra License Personal Protective Equipment Recognition | ULTRA |
| GD-CW-AU-WLD | C-WERK Ultra License Water Level Recognition for 1 Camera | ULTRA |

Content of License Packages



| FUNCTION | PROFESSIONAL | PREMIUM | ULTRA |
|--|--------------|-----------|-----------|
| Number of Cameras | unlimited | unlimited | unlimited |
| Number of Servers | 30 | 30 | unlimited |
| Thumbnail search | ✓ | ✓ | ✓ |
| Alarm search | ✓ | ✓ | ✓ |
| Bookmarking (with text search) | ✓ | ✓ | ✓ |
| 3D Maps | ✓ | ✓ | ✓ |
| Web browser client | ✓ | ✓ | ✓ |
| IOS & Android Apps | ✓ | ✓ | ✓ |
| C-WERK Cloud Service | ✓ | ✓ | ✓ |
| Fisheye Dewarping | ✓ | ✓ | ✓ |
| Edge Analytics (camera metadata) | ✓ | ✓ | ✓ |
| Blue Stream (Bandwidth Management) | ✓ | ✓ | ✓ |
| H.265 | ✓ | ✓ | ✓ |
| ONVIF profile G,S, T | ✓ | ✓ | ✓ |
| Edge Storage (Read only from SD-card or HDD) | ✓ | ✓ | ✓ |
| Event Makros | ✓ | ✓ | ✓ |
| Free Software Updates | ✓ | ✓ | ✓ |
| Cross System Client | ✓ | ✓ | ✓ |
| Time Lapse | ✓ | ✓ | ✓ |
| Data replication | — | ✓ | ✓ |
| Video Wall | — | ✓ | ✓ |
| LDAP Service | — | ✓ | ✓ |
| Edge Storage copy | — | ✓ | ✓ |
| Failover | — | ✓ | ✓ |

| FUNCTION | PROFESSIONAL | PREMIUM | ULTRA |
|---|-------------------------|--------------------------|--------------------------|
| Real-time Analysis (Object Tracker) | ✓ | ✓ | ✓ |
| C-WERK Data Reports | ✓ | ✓ | ✓ |
| Face Recognition | optional (GD-CW-AP-IFS) | ✓ | ✓ |
| Face Mask Detection | optional (GD-CW-AP-IFS) | ✓ | ✓ |
| LPR Detection | optional (GD-CW-AP-IFS) | ✓ | ✓ |
| Fire Detection | optional (GD-CW-AP-IFS) | ✓ | ✓ |
| Smoke Detection | optional (GD-CW-AP-IFS) | ✓ | ✓ |
| AI Human/Vehicle Detection | optional (GD-CW-AP-IFS) | ✓ | ✓ |
| Retail Pack (Visitors Counter, Queue Detection, Heat Map) | optional (GD-CW-AP-IFS) | ✓ | ✓ |
| Forensic Search Function | optional (GD-CW-AP-IFS) | ✓ | ✓ |
| Tag & Track | optional (GD-CW-AP-IFS) | ✓ | ✓ |
| LPR Search | optional (GD-CW-AP-IFS) | ✓ | ✓ |
| Face search | optional (GD-CW-AP-IFS) | ✓ | ✓ |
| Multicamera Search | — | ✓ | ✓ |
| Similarity Search | — | optional (GD-CW-AP-SIM) | ✓ |
| Offline Analytics | optional (GD-CW-AT-OFS) | optional (GD-CW-AT-OFS) | ✓ |
| Realtime-LPR 6 fps | optional (GD-CW-AP-LPS) | optional (GD-CW-AT-LPS) | optional (GD-CW-AU-LPS) |
| Realtime-LPR 25 fps | optional (GD-CW-AP-LPF) | optional (GD-CW-AT-LPF) | optional (GD-CW-AU-LPF) |
| Realtime-Face Recognition | optional (GD-CW-AP-FRT) | optional (GD-CW-AT-FRT) | optional (GD-CW-AU-FRT) |
| Pose Detection | optional (GD-CW-AP-HBA) | optional (GD-CW-AT-HBA) | optional (GD-CW-AU-HBA) |
| Personal Protective Equipment | optional (GD-CW-AP-PPE) | optional (GD-CW-AT-PPE) | optional (GD-CW-AU-PPE) |
| Water Level Detection | optional (GD-CW-AP-WLD) | optional (GD-CW-AT-WLD) | optional (GD-CW-AU-WLD) |
| Neural Counter | — | optional (GD-CW-AT-AINC) | optional (GD-CW-AU-AINC) |
| Administration of external Events (Alarm I/O, POS, etc.) | optional (GD-CW-AP-SRC) | optional (GD-CW-AT-SRC) | optional (GD-CW-AU-SRC) |



GD-HW-APSV08R

GD-HW-APSV012R

GD-HW-APSV024R

GD-HW-BPSV04T

GD-HW-BPSV05T

GD-HW-BPSV06T

| | Professional | Professional | Professional | Professional | Professional | Professional |
|-----------------------|--|---|---|---|---|---|
| CPU | Intel® Xeon® E-2224, 4 Cores, 4 Threads, 8 MB Cache, 3.4 GHz Base Frequency, 4.6 GHz Turbo Frequency | Intel® Xeon® E-2274G, 4 Cores, 8 Threads, 8 MB Cache, 4.0 GHz Base Frequency, 4.9 GHz Turbo Frequency | Intel® Xeon® E-2274G, 4 Cores, 8 Threads, 8 MB Cache, 4.0 GHz Base Frequency, 4.9 GHz Turbo Frequency | Intel® Core™ i5-9400, 6 Cores, 6 Threads, 9 MB Cache, 2.90 GHz Base Frequency, 4.10 GHz Turbo Frequency | Intel® Core™ i7-10700K, 8 Cores, 16 Threads, 16 MB Cache, 3.80 GHz Base Frequency, 5.10 GHz Turbo Frequency | Intel® Core™ i9-10900X, 10 Cores, 20 Threads, 19.25 MB Cache, 3.70 GHz Base Frequency, 4.50 GHz Turbo Frequency |
| Graphic Card | Onboard Graphics | Onboard Graphics | Onboard Graphics | NVIDIA Quadro P1000 PNY, 4 GB, GDDR5 | NVIDIA Quadro P1000 PNY, 4 GB, GDDR5 | NVIDIA Quadro P1000 PNY, 4 GB, GDDR5 |
| Memory | 16 GB | 16 GB | 16 GB | 8 GB DDR4 | 8 GB DDR4 | 2x 8 GB DDR4 |
| Operating System | Windows Server 2022 Essentials | Windows Server 2022 Essentials | Windows Server 2022 Essentials | Microsoft® Windows 10 64-bit | Microsoft® Windows 10 64-bit | Microsoft® Windows 10 64-bit |
| Network Interface | 2x RJ45 Gbit LAN | 2x RJ45 Gbit LAN | 2x RJ45 Gbit LAN | 1x RJ45 Gbit LAN | 1x RJ45 Gbit LAN | 2x RJ45 Gbit LAN |
| Operating Temperature | +5 °C ~ +40 °C (+41°F ~ + 104°F) | +5 °C ~ +40 °C (+41°F ~ + 104°F) | +5 °C ~ +40 °C (+41°F ~ + 104°F) | +5 °C ~ +40 °C (+41°F ~ + 104°F) | +5 °C ~ +40 °C (+41°F ~ + 104°F) | +5 °C ~ +40 °C (+41°F ~ + 104°F) |
| Supply Voltage | 100 ~ 240 VAC, 50Hz / 60Hz | 100 ~ 240 VAC, 50Hz / 60Hz | 100 ~ 240 VAC, 50Hz / 60Hz | 100 ~ 240 VAC, 50Hz / 60Hz | 100 ~ 240 VAC, 50Hz / 60Hz | 100 ~ 240 VAC, 50Hz / 60Hz |
| Power Consumption | 600 W | 2x 800W | 2x 650 W | 450 W | 450 W | 450 W |



GD-HW-HDD-4TB

Professional

Server HDD 4TB Western Digital Purple

GD-HW-HDD-8TB

Professional

Server HDD 8TB Western Digital Purple

GD-HW-HDD-6TB

Professional

Server HDD 6TB Western Digital Purple

GD-HW-HDD-10TB

Professional

Server HDD 10TB Western Digital Purple

GD-HW-HDD-12TB

Professional

Server HDD 12TB Western Digital Purple



GD-HW-ACSW04D



GD-HW-ACSW08D



GD-HW-ACSW16R



GD-HW-ACSW24R

| | Essential | Essential | Essential | Essential |
|---------------------------|---|--|---|---|
| Ports | 1 x 10/100 Base-T Hi-PoE RJ45(Auto-MDI/MDI-X) 3 x 10/100 Base-T PoE RJ45(Auto-MDI/MDI-X) 2 x 10/100 RJ45 (Auto-MDI/MDI-X) | 1 x 10/100 Base-T Hi-PoE RJ45(Auto-MDI/MDI-X) 7 x 10/100 Base-T PoE RJ45(Auto-MDI/MDI-X) 2 x 10/100/1000 RJ45 (Auto-MDI/MDI-X) | 16 x 10/100/1000 Base-T PoE RJ45(Auto-MDI/MDI-X) 2 Gigabit SFP fiber optical ports | 24 x 10/100/1000 Base-T PoE RJ45(Auto-MDI/MDI-X) 2 Gigabit SFP fiber optical ports |
| PoE Specification | "Port 1: 802.3af/at, 802.3bt Port 2 to 4: 802.3af/at" | "Port 1: 802.3af/at, 802.3bt Port 2 to 8: 802.3af/at" | 802.3af/at (PSE) | 802.3af/at (PSE) |
| Switching Method | Store and Forward | Store and Forward | Store and Forward | Store and Forward |
| Switch Throughput | 1.2 Gbps | 5.6 Gbps | 36 Gbps | 52 Gbps |
| MAC Address Table | 2K | 16K | 8K | 8K |
| ISO Standard | IEEE 802.3, IEEE 802.3u, IEEE 802.3x | IEEE 802.3, IEEE 802.3u, IEEE 802.3x, IEEE 802.3ab, IEEE 802.3z | IEEE 802.3, IEEE 802.3u, IEEE 802.3x | IEEE 802.3, IEEE 802.3u, IEEE 802.3x, IEEE 802.3ab, IEEE 802.3z |
| PoE Budget | 60 W | 110 W | 125 W | 225 W |
| Max power Output per Port | Port 1: 60 watts max Port 2 to 4: 30 watts max | Port 1: 90 watts max Port 2 to 8: 30 watts max | 54V DC, 30 watts max | 54V DC, 30 watts max |
| Fan | Fanless | Fanless | Fanless | Temperature-controlled |
| Material | Metal | Metal | Metal | Metal |
| Operating Temperature | -10°C ~ +55°C (+14°F ~ + 131°F) | -10°C ~ +55°C (+14°F ~ + 131°F) | -10°C ~ +55°C (+14°F ~ + 131°F) | -10°C ~ +55°C (+14°F ~ + 131°F) |
| Supply Voltage | 48 VDC, Power Adapter 100 ~ 240 VAC 50, 60Hz included | 48 VDC, Power Adapter 100 ~ 240 VAC 50, 60Hz included | 100 ~ 240 VAC, 50Hz / 60Hz | 100 ~ 240 VAC, 50Hz / 60Hz |
| Power Consumption | Max. power consumption 65W Power consumption in idle 5W | Max. power consumption 120W Power consumption in idle 10W | Max. power consumption 150W Power consumption in idle 25W | Max. power consumption 250W Power consumption in idle 25W |



GD-CT-AC2105B



GD-CT-AC2113E



GD-CT-AP2117E



GD-CT-CC2126V



GD-CT-AP2837V

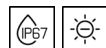


GD-CT-CP2837V



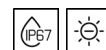
GD-CT-AP5826V

| | Essential | Essential | Professional | Essential | Professional | Professional | Professional |
|-----------------------|--|---|--|---|--|------------------------------------|--|
| Image Sensor | 2 Megapixel progressive scan CMOS | 2 Megapixel progressive scan CMOS | 2 Megapixel progressive scan CMOS | 2 Megapixel progressive scan CMOS | 2 Megapixel progressive scan CMOS | 2 Megapixel progressive scan CMOS | 5 Megapixel progressive scan CMOS |
| Pixels-Effective | 1920 (H) x 1080 (V) | 1984 (H) x 1105 (V) | 1920 (H) x 1080 (V) | 1920 (H) x 1080 (V) | 1920 (H) x 1080 (V) | 1920 (H) x 1080 (V) | 2560 (H) x 1944 (V) |
| Sensitivity Colour | 0.005 Lux @ F1.2 (AGC ON) | 0.01 Lux @ F1.2 (AGC ON) | 0.005 Lux @ F1.2 | 0.01 Lux @ F1.2 (AGC ON) | 0.003 Lux @ F1.2 (AGC ON) | 0.003 Lux @ F1.2 (AGC ON) | 0.008 Lux @ F1.2 (AGC ON) |
| Sensitivity B/W | — | 0 Lux LED IR on | 0 Lux LED IR on | 0 Lux LED IR on | 0 Lux LED IR on | 0 Lux LED IR on | 0 Lux LED IR on |
| Lens Focal Length | — | 2.8 mm | 2.8 mm | 2.7 ~ 13.5 mm | 2.7 ~ 13.5 mm motorized, autofocus | 2.7 ~ 13.5 mm motorized, autofocus | 2.8 ~ 12 mm motorized |
| Col/B&W | Auto (Electronic), Color, B&W | Auto, Color, B&W, IR-cut filter removable (ICR) | Auto, Color, B&W, IR-cut filter removable (ICR) | Auto, Color, B&W, IR-cut filter removable (ICR) | Auto, Color, B&W, IR-cut filter removable (ICR) | Auto (Electronic), Color, B&W | Auto, IR-cut filter removable (ICR) |
| Wide Dynamic Range | 120 dB | Digital WDR | 130 dB | Digital WDR | 130 dB | 130 dB | Digital WDR |
| Image Enhancement | BLC, 3D DNR, Mirror, AGC, WDR, Defect Pixel Correction | BLC, 2D DNR, Anti-Flicker, Mirror, AGC | BLC, 3D DNR, Anti-Flicker, Mirror, AGC, WDR, Brightness, Sharpness, Smart-IR | BLC, 2D DNR, AGC, HLC, Global | BLC, 3D DNR, Anti-Flicker, Mirror, AGC, WDR, Brightness, Sharpness, Smart-IR | BLC, 3D DNR, HLC | BLC, 2D DNR, Anti-Flicker, Mirror, AGC |
| Max. IR Distance | — | Up to 20 m | Up to 20 m | Up to 40 m | Up to 60 m | Up to 60 m | Up to 30 m |
| Video Outputs | 1x HD-TVI (BNC) , 1x Composite 1.0Vp-p 75 OHM (BNC) | 1x HD-TVI (BNC) | 1x HD-TVI (BNC) | 4 in 1 Switch between TVI, AHD, CVI and CVBS | 1x HD-TVI (BNC) | 1x HD-TVI (BNC) | 1x HD-TVI (BNC) |
| Regulation | CE, EAC, FCC, RoHS Compliant | CE, EAC, FCC, RoHS Compliant | CE, EAC, FCC, RoHS Compliant | CE, EAC, FCC, RoHS Compliant | CE, EAC, FCC, RoHS Compliant | CE, EAC, FCC, RoHS Compliant | CE, EAC, FCC, RoHS Compliant |
| Operating Temperature | -30 °C ~ 60 °C (-22 °F ~ 140 °F) | -40 °C ~ 60 °C (-40 °F ~ 140 °F) | -40 °C ~ 60 °C (-40 °F ~ 140 °F) | -40 °C ~ 60 °C (-40 °F ~ 140 °F) | -40 °C ~ 60 °C (-40 °F ~ 140 °F) | -40 °C ~ 60 °C (-40 °F ~ 140 °F) | -40 °C ~ 60 °C (-40 °F ~ 140 °F) |
| Supply Voltage | 12 VDC ±10% | 12 VDC ±10% | 12 VDC ±10% | 12 VDC ±10% | 12 VDC ±15%, PoC.af | 12 VDC ±15%, PoC.af | 12 VDC ±15%, PoC.af |
| Power Consumption | Max. 4 W | Max. 4 W | Max. 4.5 W | Max. 5 W | Max. 7 W | Max. 7 W | Max. 8 W |



**GD-CT-BC2116T****GD-CT-BC2126T****GD-CT-AP2837T****GD-CT-BP5837T****GD-CT-BP2247P**

| | Essential | Essential | Professional | Professional | Professional |
|-----------------------|---|---|---|---|--|
| Image Sensor | 2 Megapixel progressive scan CMOS | 2 Megapixel progressive scan CMOS | 2 Megapixel progressive scan CMOS | 5 Megapixel progressive scan CMOS | 2 Megapixel progressive scan CMOS |
| Pixels-Effective | 1920 (H) x 1080 (V) | 1920 (H) x 1080 (V) | 1920 (H) x 1080 (V) | 2560 (H) x 1944 (V) | 1920 (H) x 1080 (V) |
| Sensitivity Colour | 0.01 Lux @ F1.2 (AGC ON) | 0.01 Lux @ F1.2 (AGC ON) | 0.003 Lux @ F1.2 (AGC ON) | 0.01 Lux @ F1.2 (AGC ON) | 0.005 Lux @ F1.6 (AGC ON) |
| Sensitivity B/W | 0 Lux LED IR on | 0 Lux LED IR on | 0 Lux LED IR on | 0 Lux LED IR on | 0 Lux LED IR on |
| Lens Focal Length | 3.6 mm | 2.7 ~ 13.5 mm | 2.7 ~ 13.5 mm motorized, autofocus | 2.7 ~ 13.5 mm motorized | 4.8 ~ 120 mm motorized, autofocus |
| Col/B&W | Auto, Color, B&W, IR-cut filter removable (ICR) | Auto, Color, B&W, IR-cut filter removable (ICR) | Auto, Color, B&W, IR-cut filter removable (ICR) | Auto, Color, B&W, IR-cut filter removable (ICR) | Auto, Color, B&W, IR-cut filter removable (ICR) |
| Wide Dynamic Range | Digital WDR | Digital WDR | 130 dB | Digital WDR | 120 dB |
| Image Enhancement | BLC, 2D DNR, Anti-Flicker, Mirror, AGC | BLC, 2D DNR, AGC, HLC, Global | BLC, 3D DNR, HLC, Anti-Flicker, Mirror, AGC, WDR, Brightness, Sharpness, Smart-IR | BLC, 2D DNR, AGC, HLC, Global | BLC, 3D DNR, EIS, HLC |
| Max. IR Distance | Up to 20 m | Up to 40 m | Up to 80 m | Up to 40 m | Up to 150m |
| Video Outputs | 1x HD-TVI (BNC) | 4 in 1 Switch between TVI, AHD, CVI and CVBS | 1x HD-TVI (BNC) , 1x Composite 1.0Vp-p 75 OHM (BNC) WDR off | 1x HD-TVI (BNC) | Switchable TVI/AHD/CVI/CVBS video output, (NTSC or PAL composite, BNC) |
| Regulation | CE, EAC, FCC, RoHS Compliant | CE, EAC, FCC, RoHS Compliant | CE, EAC, FCC, RoHS Compliant | CE, EAC, FCC, RoHS Compliant | CE, EAC, FCC, RoHS Compliant |
| Operating Temperature | -40 °C ~ 60 °C (-40 °F ~ 140 °F) | -40 °C ~ 60 °C (-40 °F ~ 140 °F) | -40 °C ~ 60 °C (-40 °F ~ 140 °F) | -40 °C ~ 60 °C (-40 °F ~ 140 °F) | -40 °C ~ 65 °C (-40 °F ~ 149 °F) |
| Supply Voltage | 12 VDC ±10% | 12 VDC ±10% | 12 VDC ±15%, PoC.at | 12 VDC ±15%, PoC.at | 24 VAC, 50, 60Hz |
| Power Consumption | Max. 4 W | Max. 5 W | Max. 8.2 W | Max. 9.5 W | Max. 30 W |





| | GD-RT-BC3004N | GD-RT-BC3008N | GD-RT-BC3016N | GD-RT-AP5004P | GD-RT-AP8008P | GD-RT-AP8016N |
|------------------------------|--|--|--|--|--|--|
| | Essential | Essential | Essential | Professional | Professional | Professional |
| Video Inputs | 4-ch, BNC | 8-ch, BNC | 16-ch, BNC | 4-ch, BNC | 8-ch, BNC, supporting PoC | 16-ch, BNC |
| HD-TVI Input | 4MP, 3 MP, 1080p30, 1080p25 | 3 MP, 1080p30 | 3 MP, 1080p30 | 8 MP, 5 MP, 4 MP, 3 MP, 1080p30 | 8 MP, 5 MP, 4 MP, 3 MP, 1080p30 | 8 MP, 5 MP, 4 MP, 3 MP, 1080p30 |
| AHD Input | 4 MP, 1080p25, 1080p30 | 4 MP, 1080p25, 1080p30 | 4 MP, 1080p25, 1080p30 | 5 MP, 4 MP, 1080p30 | 5 MP, 4 MP, 1080p30 | 5 MP, 4 MP, 1080p30 |
| CVI Input | 4 MP, 1080p30 | 4 MP, 1080p30 | 4 MP, 1080p30 | 4 MP, 1080p30 | 4 MP, 1080p30 | 5MP, 4 MP, 1080p30 |
| CVBS Input | PAL, NTSC | PAL, NTSC | PAL, NTSC | PAL, NTSC | PAL, NTSC | PAL, NTSC |
| IP Inputs | 5 (6 IP enhance mode) | 4 (12 IP enhance mode) | 18 (24 IP enhance mode) | 6 (8 IP enhance mode) | 12 (16 IP enhance mode) | 24 (32 IP enhance mode) |
| Recording Resolution | 4 MP, 3 MP, 1080p, 720p, WD1, 4CIF (when 1080P lite not enabled) | 4 MP, 3 MP, 1080p, 720p, WD1, 4CIF (when 1080P lite not enabled) | 4 MP, 3 MP, 1080p, 720p, WD1, 4CIF (when 1080P lite not enabled) | 8 MP, 5 MP, 4 MP, 3 MP, 1080p, 720p, WD1, 4CIF, VGA, CIF | 8 MP, 5 MP, 4 MP, 3 MP, 1080p, 720p, WD1, 4CIF, VGA, CIF | 8 MP, 5 MP, 4 MP, 3 MP, 1080p, 720p, WD1, 4CIF, VGA, CIF |
| Video Compression | H.264, H.264+, H.265, H.265pro, H.265pro+ | H.264, H.264+, H.265, H.265pro, H.265pro+ | H.264, H.264+, H.265, H.265pro, H.265pro+ | H.264, H.264+, H.265, H.265pro, H.265pro+ | H.264, H.264+, H.265, H.265pro, H.265pro+ | H.264, H.264+, H.265, H.265pro, H.265pro+ |
| Recording Mode | Continuous, Event Alarm, Motion, Video Loss, Schedule | Continuous, Event Alarm, Motion, Video Loss, Schedule | Continuous, Event Alarm, Motion, Video Loss, Schedule | Continuous, Event Alarm, Motion, Video Loss, Schedule | Continuous, Event Alarm, Motion, Video Loss, Schedule | Continuous, Event Alarm, Motion, Video Loss, Schedule |
| Search Mode | Date, Time, Event Alarm, Motion, Search Backup, Quick search by object or event type | Date, Time, Event Alarm, Motion, Search Backup, Quick search by object or event type | Date, Time, Event Alarm, Motion, Search Backup, Quick search by object or event type | Date, Time, Event Alarm, Motion, Search Backup | Date, Time, Event Alarm, Motion, Search Backup | Date, Time, Event Alarm, Motion, Search Backup |
| External Backup | USB HDD, USB Memory, USB DVD-R, Network | USB HDD, USB Memory, USB DVD-R, Network | USB HDD, USB Memory, USB DVD-R, Network | USB HDD, USB Memory, USB DVD-R, Network | USB HDD, USB Memory, USB DVD-R, Network | USB HDD, USB Memory, Network |
| Motion Detection | On, Off, Area Setting | On, Off, Area Setting | On, Off, Area Setting | On, Off, Area Setting | On, Off, Area Setting | On, Off, Area Setting |
| HDMI Output | 1920×1080, 60Hz, 1280×1024, 60Hz, 1280×720, 60Hz, 1024×768, 60Hz | 1920×1080, 60Hz, 1280×1024, 60Hz, 1280×720, 60Hz, 1024×768, 60Hz | 1920×1080, 60Hz, 1280×1024, 60Hz, 1280×720, 60Hz, 1024×768, 60Hz | 1920×1080, 60Hz, 1280×1024, 60Hz, 1280×720, 60Hz, 1024×768, 60Hz | 4K (3840 × 2160)/30Hz | 4K (3840 × 2160)/30Hz |
| Harddisk bay | 1 x SATA III | 1 x SATA III | 1 x SATA III | 1 x SATA III | 2 x SATA III | 2 x SATA III |
| Max. Storage Capacity | Up to 10TB capacity for each HDD | Up to 10TB capacity for each HDD | Up to 10TB capacity for each HDD | Up to 10TB capacity for each HDD (not mandatory) | Up to 10TB capacity for each HDD | Up to 10TB capacity for each HDD |
| PoC Interface | — | — | — | 4-ch | 8-ch | — |
| Alarm Inputs | — | — | — | 4 contact input N/ O or N/ C | 8 contact input N/ O or N/ C | 16 contact input N/ O or N/ C |
| Alarm Outputs | — | — | — | 1 | 4 | 1 |
| Supply Voltage | 12 VDC, Power Adapter 100 ~ 240 VAC 50, 60Hz included | 12 VDC, Power Adapter 100 ~ 240 VAC 50, 60Hz included | 12 VDC, Power Adapter 100 ~ 240 VAC 50, 60Hz included | 48 VDC, Power Adapter 100 ~ 240 VAC 50, 60Hz included | 48 VDC, Power Adapter 100 ~ 240 VAC 50, 60Hz included | 12 VDC, Power Adapter 100 ~ 240 VAC 50, 60Hz included |
| Power Consumption | ≤ 18 W without harddisk | ≤ 18 W without harddisk | ≤ 24W without hard disks | ≤ 40 W without harddisk | ≤ 60 W without hard disk, PoC | ≤ 19 W without hard disks |

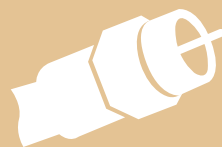




GD-RT-AP8016P

GD-RT-AT8016N

| | Professional | Premium |
|-----------------------|--|---|
| Video Inputs | 16-ch, supporting PoC | 16-ch, BNC |
| HD-TVI Input | 8 MP, 5 MP, 4 MP, 3 MP, 1080p30 | 8 MP, 5 MP, 4 MP, 3 MP, 1080p30 |
| AHD Input | 5 MP, 4 MP, 1080p30 | 5 MP, 4 MP, 1080p30 |
| CVI Input | 4 MP, 1080p30 | 4 MP, 1080p30 |
| CVBS Input | PAL, NTSC | PAL, NTSC |
| IP Inputs | 24 (32 IP enhance mode) | 18, up to 8 MP |
| Recording Resolution | 8 MP, 5 MP, 4 MP, 3 MP, 1080p, 720p, WD1, 4CIF, VGA, CIF | 8 MP, 5 MP, 4 MP, 3 MP, 1080p, 720p, WD1, 4CIF, VGA, CIF |
| Video Compression | H.264, H.264+, H.265, H.265pro, H.265pro+ | H.264, H.264+, H.265, H.265pro, H.265pro+ |
| Recording Mode | Continuous, Event Alarm, Motion, Video Loss, Schedule | Continuous, Event Alarm, Motion, Video Loss, Schedule |
| Search Mode | Date, Time, Event Alarm, Motion, Search Backup | Date, Time, Event Alarm, Motion, Search Backup |
| External Backup | USB HDD, USB Memory, USB DVD-R, Network | USB HDD, USB Memory, USB DVD-R, Network, eSATA |
| Motion Detection | On, Off, Area Setting | On, Off, Area Setting |
| HDMI Output | 4K (3840 × 2160)/30Hz | HDMI1 & VGA: 1920 × 1080, 60Hz HDMI2: 4K (3840 × 2160) |
| Harddisk bay | 2 x SATA III | 4 x SATA III, 1 x eSATA |
| Max. Storage Capacity | Up to 10TB capacity for each HDD | Up to 10TB capacity for each HDD |
| PoC Interface | 16-ch | — |
| Alarm Inputs | 4 contact input N/ O or N/ C | 16 contact input N/ O or N/ C |
| Alarm Outputs | 1 | 4 |
| Supply Voltage | 100 ~ 240 VAC, 50Hz / 60Hz | 100 ~ 240 VAC, 50Hz / 60Hz |
| Power Consumption | ≤ 140 W without hard disk , PoC | ≤ 65W without hard disks |



PoC

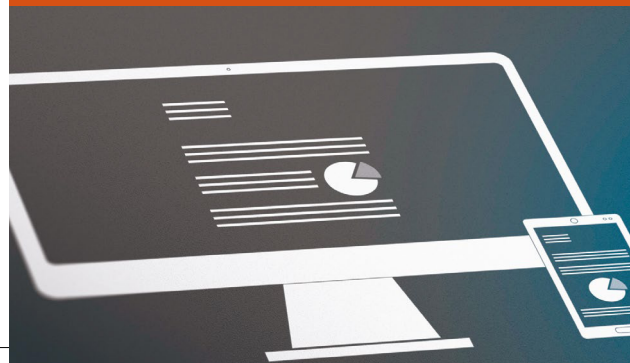
POWER OVER COAXIAL (POC)

With the Power over Coaxial (PoC) option the camera can be powered by the DVR via coaxial video cable. This makes the usage of separate cables and power supplies needless which would otherwise be needed to power your cameras. For installers this means a much more time and cost-efficient installation.

PoC can be used on cable runs up to 800 meters for a 5 MP-camera (depending on cable type) and is available in 4, 8 and 16 channel DVRs (models ending with -P). A full complement of GRUNDIG TVI PoC-cameras is also available which together offer a cost effective and time saving solution to your TVI installations.

MIGRATION FROM ANALOGUE COAXIAL CABLE TO IP SOLUTIONS

GRUNDIG offers the most efficient and cost-effective upgrade from existing video security systems to high-resolution technology solutions. Depending on the existing cable and technology in place, with GRUNDIG you can upgrade your system using high-resolution cameras, display and recording. With high-definition TVI-cameras you can replace analogue standard-resolution cameras by high-resolution cameras and can upgrade from your existing embedded system to a TVI embedded recorder — which enhances your equipment from a 0.5 to a 5 Megapixel resolution system.



GRUNDIG embedded recorders are ONVIF profile G compatible and can be managed by the GRUNDIG Video Management System or by any other third-party VMS.

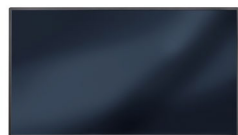
GRUNDIG HD-TVI recorders operate with all common analogue standards such as CVBS, 960H, CVI, AHD and of course HD-TVI — up to 8 Megapixel resolution. And even more: In addition, IP camera channels are available to mix all front-end technologies on site.

**GD-ML-AP1031SD****GD-ML-DP2230HD****GD-ML-DP2430HD****GD-ML-DP2730HD**

| | Professional | Professional | Professional | Professional |
|-------------------------|---|---|---|---|
| LCD Panel size | 25.6 cm (10.1") Diagonal AM-TFT LED Backlight | 54.6 cm (21, 5") Diagonal AM-TFT LED Backlight | 59.9 cm (23.6") Diagonal AM-TFT LED Backlight | 68.5 cm (27") Diagonal AM-TFT LED Backlight |
| Pixels-Total | 1280 (H) x 800 (V) | 1920 (H) x 1080 (V) | 1920 (H) x 1080 (V) | 1920 (H) x 1080 (V) |
| Pixel Pitch | 0.192 mm (H) x 0.192 mm (V) | 0.248 mm (H) x 0.248 mm (V) | 0.248 mm (H) x 0.248 mm (V) | 0.248 mm (H) x 0.248 mm (V) |
| Aspect Ratio | 16 : 9 | 16 : 9 | 16 : 9 | 16 : 9 |
| Video Standard | PAL, NTSC | PAL, NTSC | PAL, NTSC | PAL, NTSC |
| Video Inputs | 1x Composite, BNC looped, 1x VGA, 1x HDMI | 1x HDMI, 1x VGA, 1x USB | 1x HDMI, 1x VGA, 1x USB | 1x HDMI, 1x VGA, 1x USB |
| Brightness | 350 cd, m ² | 300 cd, m ² | 300 cd, m ² | 300 cd, m ² |
| Contrast Ratio | 800:1 | 1000:1 | 1000:1 | 1000:1 |
| Number of Colours | 262K | 16.7 million | 16.7 million | 16.7 million |
| Viewing Angle | 160° (H) ~ 160° (V) | 170° (H) ~ 160° (V) | 170° (H) ~ 160° (V) | 170° (H) ~ 160° (V) |
| Response Time | 12 ms | 5 ms | 5 ms | 5 ms |
| Display protection | Tempered acryl glass with anti-reflection coating | — | — | — |
| Audio Inputs | 1x 3.5mm jack (Line) , 1x HDMI | 1-ch, RCA (2.0 Vp-p, 1kΩ) | 1-ch, RCA (2.0 Vp-p, 1kΩ) | 1-ch, RCA (2.0 Vp-p, 1kΩ) |
| Speakers | yes | 2 x 2 W | 2 x 2 W | 2 x 2 W |
| Vesa Mount | 75 x 75 mm | 75 x 75 mm | 100 x 100 mm | 75 x 75 mm |
| OSD (On Screen Display) | Yes, multi language | Yes, multi language | Yes, multi language | Yes, multi language |
| Accessories included | Stand, power adapter, HDMI cable and remote control | Power Adapter and HDMI cable | Power Adapter and HDMI cable | Power Adapter and HDMI cable |
| Regulation | CE, EAC, FCC, RoHS Compliant | CE, EAC, FCC, RoHS Compliant | CE, EAC, FCC, RoHS Compliant | CE, EAC, FCC, RoHS Compliant |
| Power Consumption | Max. 12 W | Max. 21 W | Max. 21 W | Max. 21 W |
| Supply Voltage | 12 VDC, Power Adapter 100 ~ 240 VAC 50, 60Hz included | 12 VDC, Power Adapter 100 ~ 240 VAC 50, 60Hz included | 12 VDC, Power Adapter 100 ~ 240 VAC 50, 60Hz included | 12 VDC, Power Adapter 100 ~ 240 VAC 50, 60Hz included |



GD-ML-BP4330HD



GD-ML-BP5540UHD

| Professional | Professional |
|---|--|
| 109 cm (43") Diagonal AM-TFT LED Backlight | 140 cm (55") Diagonal AM-TFT LED Backlight |
| 1920 (H) x 1080 (V) | 3840 (H) x 2160 (V) |
| 0.248 mm (H) x 0.248 mm (V) | 0.315 mm (H) x 0.315 mm (V) |
| 16 : 9 | 16 : 9 |
| PAL, NTSC | PAL, NTSC |
| 2x HDMI, 1x VGA, 1x AV | 1x Display Port, 3x HDMI |
| 500 cd, m ² | 350 cd, m ² |
| 1000:1 | 4000:1 |
| 16.7 million | 1073 G |
| 178° (H) ~ 178° (V) | 178° (H) ~ 178° (V) |
| 5 ms | 5 ms |
| — | — |
| 1-ch, RCA (2.0 Vp-p, 1kΩ) | — |
| 2 x 5 W | — |
| 200 x 200 mm | 400 x 400 mm |
| Yes, multi language | Yes, multi language |
| Stand, power cable, HDMI cable and remote control | Power Adapter and HDMI cable, remote control |
| CE, EAC, FCC, RoHS Compliant | CE, EAC, FCC, RoHS Compliant |
| Max. 95 W | Max. 130 W |
| 100 ~ 240 VAC, 50Hz / 60Hz | 100 ~ 240 VAC, 50Hz / 60Hz |



THE MONITOR SERIES FROM GRUNDIG SECURITY: SCREENS WITH TRADITION!

Our latest monitor series impresses with its elegant design and ultra-thin screen edges.

At the same time, it meets the requirements of modern video systems. The devices are equipped with extra robust components to ensure reliable use 24 hours a day, 7 days a week, 365 days a year.

In addition, the panels have been specially selected for video surveillance applications and use technologies to prevent ghosting and offer high brightness and contrast values.



GD-CI-AP2605B
GD-CI-AT8505B



GD-BR-AWA03
Wall Mount Bracket for Box Camera



GD-CI-CC2616V
GD-CI-EC4617V
GD-CI-FC4617V
GD-CI-AP4617V



GD-BR-AJX03
Junction Box



GD-CI-AC6614E



GD-BR-AJX04
Junction Box



GD-BR-AJX14
Junction Box inclined



GD-BR-AMC03
Corner Mount Bracket



GD-BR-AMW14
Wall Mount Bracket



GD-BR-AMP09
Pendant Mount Bracket



GD-BR-AMW05
Wall Mount Bracket



GD-BR-ASN01
Sunshield for Fixed Dome Cameras



GD-BR-AWJ02
Wall Mount Bracket with Junction Box



GD-CI-AP8617E



GD-BR-AJX17
Junction Box



GD-BR-AMC03
Corner Mount Bracket



GD-CI-CP4617W
GD-CI-DP4617W



GD-BR-AJX10
Junction Box



GD-BR-AMP16
Pendant Mount Bracket



GD-BR-AMW22
Wall Mount Bracket



GD-CI-CP4637E



GD-BR-AJX12
Junction Box



GD-BR-AMC01
Corner Mount Bracket



GD-BR-AML03
Pole Mount Bracket



GD-BR-AMP08
Pendant Mount Bracket



GD-BR-AMW04
Wall Mount Bracket



GD-BR-AWJ01
Wall Mount Bracket with Junction Box



GD-CI-AP2627V



GD-BR-AMF06
Flush Mount Adapter



GD-BR-AMP10
Pendant Mount Bracket



GD-BR-AMW01
Wall Mount Bracket



GD-BR-AWJ07
Wall Mount Bracket with Junction Box



GD-CI-CC4637V



GD-BR-AJX01
Junction Box



GD-BR-AMF01
Flush Mount Adapter



GD-BR-AMP08
Pendant Mount Bracket



GD-BR-AMW04
Wall Mount Bracket



GD-BR-AWJ01
Wall Mount Bracket with Junction Box



GD-CI-AP6637V



GD-BR-AJX13
Junction Box



GD-BR-AMF09
Flush Mount Adapter



GD-BR-AMP10
Pendant Mount Bracket



GD-BR-AMW01
Wall Mount Bracket



GD-BR-AWJ07
Wall Mount Bracket with Junction Box



GD-CI-CP4637V
GD-CI-BP8637V



GD-BR-AMC01
Corner Mount Bracket

GD-BR-AMF06
Flush Mount Adapter

GD-BR-AML03
Pole Mount Bracket

GD-BR-AMP10
Pendant Mount Bracket

GD-BR-AMW01
Wall Mount Bracket

GD-BR-AWJ07
Wall Mount Bracket with Junction Box



GD-CI-AP2627T
GD-CI-AP4637T
GD-CI-DT4637T
GD-CI-ET4637T
GD-CI-CT4537T
GD-CI-CT8637T
GD-CI-AT12637T



GD-BR-AMC01
Corner Mount Bracket

GD-BR-AML03
Pole Mount Bracket



GD-CI-CT4537TH
GD-CI-AT4634T
GD-CI-ET4537TH
GD-CI-BT8537TH



GD-BR-AMC03
Corner Mount Bracket

GD-BR-AML01
Pole Mount Bracket



GD-CI-AC4637P



GD-BR-AMP12
Pendant Mount Bracket

GD-BR-AMW18
Wall Mount Bracket



GD-CI-CP2647P



GD-BR-AJX02
Junction Box

GD-BR-AMF02
Flush Mount Adapter

GD-BR-AMP02
Pendant Mount Bracket (long)

GD-BR-AMP03
Pendant Mount Bracket (medium long)

GD-BR-AMP05
Pendant Mount Bracket (short)

GD-BR-AMW11
Wall Mount Bracket



GD-CI-AT4634V



GD-BR-AMC03
Corner Mount Bracket

GD-BR-AML01
Pole Mount Bracket



GD-CI-CT12617F



GD-BR-AJX08
Junction Box

GD-BR-AMW19
Wall Mount Bracket



GD-CI-CC2616T
GD-CI-DC2616T
GD-CI-EC4617T
GD-CI-FC4617T



GD-BR-AJX05
Junction Box



GD-CI-CC4637T
GD-CI-AP4617T
GD-CI-AP6637T
GD-CI-BP8637T



GD-BR-AJX04
Junction Box

GD-BR-AMC03
Corner Mount Bracket

GD-BR-AML01
Pole Mount Bracket



GD-CI-CP2747P
GD-CI-AP4647P
GD-CI-AP4747P
GD-CI-AT30516Q



GD-BR-AMA01
Parapet Wall Mount for PTZ Domes

GD-BR-AMC04
Corner Mount Bracket Junction Box for PTZ Domes

GD-BR-AMP01
Pendant Mount Bracket (long) for PTZ Domes

GD-BR-AMP04
Pendant Mount Bracket (medium long) for PTZ Domes

GD-BR-AMP06
Pendant Mount Bracket (short) for PTZ Domes

GD-BR-AMP07
Pendant Mount Bracket extendable

GD-BR-AMS01
Swan Neck Mount for PTZ Domes

GD-BR-AMW10
Wall Mount Bracket for PTZ Domes



GD-CI-AT20527Q



GD-BR-AMP04
Pendant Mount Bracket (medium long) for PTZ Domes

GD-BR-AMP06
Pendant Mount Bracket (short) for PTZ Domes

GD-BR-AMW08
Wall Mount Bracket for PTZ Domes

GD-BR-AMW09
Wall Mount Bracket Pole Mount Adapter and Junction



GD-TI-AP1614V
GD-TI-BP1603V
GD-TI-AP4607V



GD-BR-AJX01
Junction Box

GD-BR-AMP15
Pendant Mount Bracket

GD-BR-AMW16
Wall Mount Bracket

GD-BR-AWJ06
Wall Mount Bracket with Junction Box



GD-CI-CT4747P
GD-CI-BT4747P
GD-CI-AT8747P



GD-BR-AMA01S
Parapet Wall Mount for PTZ Domes silver-grey

GD-BR-AMC04S
Corner Mount Bracket Junction Box for PTZ Domes

GD-BR-AML06S
Pole Mount Bracket with Junction Box for PTZ Domes

GD-BR-AMP01S
Pendant Mount Bracket (long) for PTZ Domes

GD-BR-AMP04S
Pendant Mount Bracket (medium long) for PTZ Domes

GD-BR-AMP06S
Pendant Mount Bracket (short) for PTZ Domes

GD-BR-AMP07S
Pendant Mount Bracket extendable silver-grey

GD-BR-AMW08S
Wall Mount Bracket for PTZ Domes silver-grey

GD-BR-AMW10S
Wall Mount Bracket for PTZ Domes silver-grey

GD-BR-AMW17S
Pole Mount for PTZ Domes silver-grey



GD-TI-BP1603T
GD-TI-BP1606T
GD-TI-BP1610T
GD-TI-AP4503T
GD-TI-AP4507T
GD-TI-AP4510T
GD-TI-AT2604T
GD-TI-AT2607T
GD-TI-AT2610T
GD-TI-AT2615T
GD-TI-AT2625T
GD-TI-CT2510T
GD-TI-AT3607T
GD-TI-AT3625T



GD-BR-AMC03
Corner Mount Bracket

GD-BR-AML01
Pole Mount Bracket



GD-CT-AC2105B



GD-BR-AWA03
Wall Mount Bracket for Box Camera



GD-CT-AC2113E



GD-BR-AJX05
Junction Box

GD-BR-AMW14
Wall Mount Bracket



GD-CT-AP2117E



GD-BR-AJX04
Junction Box

GD-BR-AMW14
Wall Mount Bracket



GD-CT-CC2126V



GD-BR-AJX15
Junction Box inclined
GD-BR-AJX16
Junction Box
GD-BR-AMP17
Pendant Mount Bracket
GD-BR-AMW23
Wall Mount Bracket



GD-CT-AP2837V
GD-CT-AP5826V



GD-BR-AJX01
Junction Box
GD-BR-AMF08
Flush Mount Adapter
GD-BR-AMP14
Pendant Mount Bracket
GD-BR-AMW15
Wall Mount Bracket
GD-BR-AWJ05
Wall Mount Bracket with Junction Box



GD-CT-CP2837V



GD-BR-AJX15
Junction Box inclined
GD-BR-AJX16
Junction Box
GD-BR-AMC03
Corner Mount Bracket
GD-BR-AML01
Pole Mount Bracket
GD-BR-AMP17
Pendant Mount Bracket
GD-BR-AMW23
Wall Mount Bracket



GD-CT-BC2116T



GD-BR-AJX05
Junction Box



GD-CT-BC2126T



GD-BR-AJX04
Junction Box
GD-BR-AJX05
Junction Box
GD-BR-AMC03
Corner Mount Bracket
GD-BR-AML01
Pole Mount Bracket



GD-CT-AP2837T
GD-CT-BP5837T



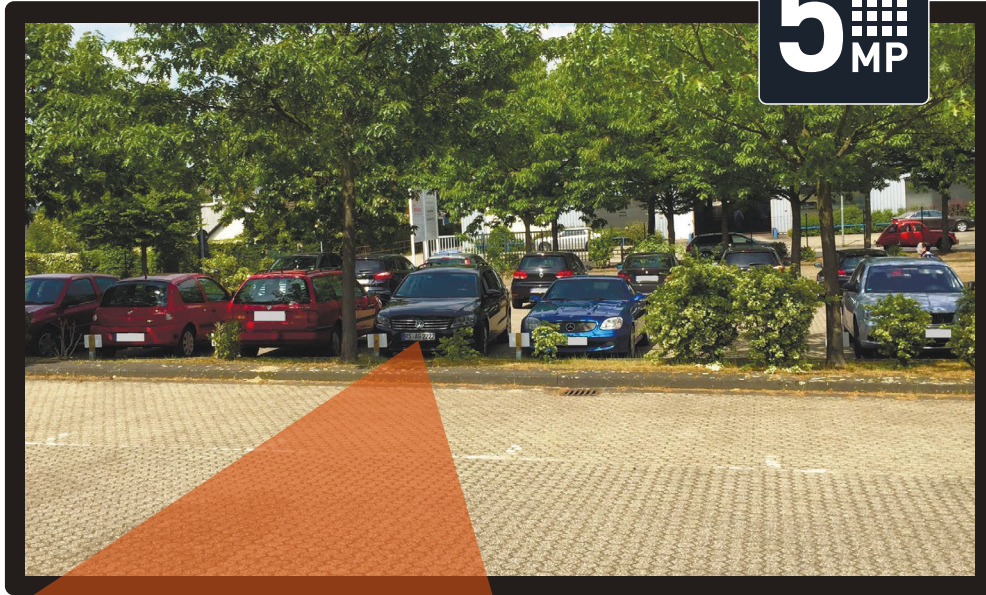
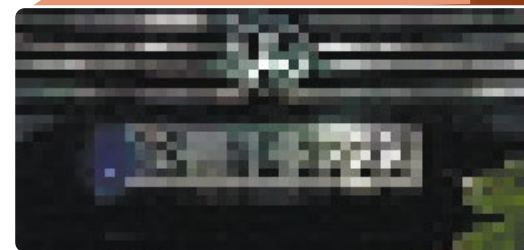
GD-BR-AJX04
Junction Box
GD-BR-AMC03
Corner Mount Bracket
GD-BR-AML01
Pole Mount Bracket



GD-CT-BP2247P



GD-BR-AMA01
Parapet Wall Mount for PTZ Domes
GD-BR-AMC04
Corner Mount Bracket Junction Box for PTZ Domes
GD-BR-AMP01
Pendant Mount Bracket (long) for PTZ Domes
GD-BR-AMP04
Pendant Mount Bracket (medium long) for PTZ Domes
GD-BR-AMP06
Pendant Mount Bracket (short) for PTZ Domes
GD-BR-AMP07
Pendant Mount Bracket extendable
GD-BR-AMS01
Swan Neck Mount for PTZ Domes
GD-BR-AMW10
Wall Mount Bracket for PTZ Domes
GD-BR-AWJ03
Wall Mount Bracket with Junction Box for PTZ Domes

5
MP**2**
MP

RESOLUTION 5 MEGAPIXELS VERSUS 2 MEGAPIXELS

Resolution

GRUNDIG offers a wide range of cameras, with resolutions from 1 up to 12 megapixels. This allows use of the most cost-effective camera in many and various applications. Depending on the area that needs to be monitored, and on the level of desired recognition, GRUNDIG always offers the most effective camera to manage the surveillance job.

SMART LINE: THE NDAA-COMPLIANT PRODUCT LINE FROM GRUNDIG SECURITY

The SMART product line from GRUNDIG Security comprises nine camera models with 5 or 8 megapixels resolution and various form factors. The new product line is complemented by four — partly fanless — 4-, 8- and 16-channel recorders. A comprehensive range of accessories rounds off the NDAA-compliant SMART product line.

What can you expect from the new SMART product line from GRUNDIG Security?

Leaving our tried and tested reliability aside, you will also find a whole lot of image analysis functions, supported by artificial intelligence (AI). And there's a lot of functionality available. You can use facial recognition, for instance, to recognise people, or the LPR function to identify vehicle licence plates. Or you can quite simply reduce the frequency of false alarms signalling a spurious break-in or perimeter breach, by classifying objects as 'vehicle', 'person' or 'other'.

Are you curious about what else the products in the SMART product line from GRUNDIG Security can do?

Then you should download the SMART product overview:



The SMART cameras from GRUNDIG Security can recognise faces in crowds of people, count heads and determine the length of queues at your supermarket till, therefore helping you to make the best possible use of your resources. They'll let you know when unauthorised people cross pre-defined lines or enter certain areas, and they'll trigger an alarm when objects are left at your doorstep.

You'd rather see these analysis functions in action?

Then take a look at the "SMART Line" playlist on our YouTube channel:



Identify licence plates



Classify persons & vehicles



Identify faces



Enter area



AI FUNCTIONALITY

Detect left/removed objects



Use heat map



Cross lines



Manage queues



Analyse crowds



Count people/objects



Detect unusual noises





GD-KB-AP1420P



GD-KB-AP1120P



GD-KB-AT2430P

| | Professional | Professional | Premium |
|-----------------------|--|--|--|
| LCD Panel size | 6.5 cm (2.6") Diagonal AM-TFT LED Backlight | — | 10.1" (25.6 cm) TFT LCD colour touch display, 1280 x 800 |
| PTZ Control | 4-axis joystick, PTZ-, focus- & iris-control, setting and calling Presets, Patterns & Patrols, Auto-Scan, Auto-Pan, Wiper, AUX | 4-axis joystick, PTZ-, focus- & iris-control, setting and calling Presets, Patterns & Patrols, Auto-Scan, Auto-Pan, Wiper, AUX | 4-axis joystick, PTZ-, focus- & iris-control, setting and calling Presets, Patterns & Patrols, Auto-Scan, Auto-Pan, Wiper, AUX |
| DVR Control | Play, Stop, Pause, FF, RW, Rec, PTZ, Menu, Search, Backup, Monitors | Play, Stop, Pause, FF, RW, Rec, Menu, Search, Backup, Monitors | Play, Stop, Pause, FF, RW, Rec, Menu, Search, Backup |
| Lens Control | Iris (Close, Open) , Focus (Near, Far, Auto) , Zoom (Tele, Wide) | Iris (Close, Open) , Focus (Near, Far, Auto) , Zoom (Tele, Wide) | Iris (Close, Open) , Focus (Near, Far, Auto) , Zoom (Tele, Wide) |
| Operating System | — | Microsoft Windows® and Linux® | Android 6.0 |
| Users | Up to 16 users, 2 levels: Administrator and User | 1 user, 1 level | Up to 32 users, 2 levels: Administrator and User |
| Video Compression | — | — | H.264, H.265 |
| Audio Input/Output | — | — | 1-ch audio input and 1-ch audio output |
| Serial Interface(s) | 1x RS-232, 1x RS-422, 1x RS-485 | USB 2.0, DirectX | 2x USB 2.0 (RS232/485 with adapter) |
| Network Interface | — | — | 1x 10, 100, 1000 Base T, TX (RJ-45) |
| Suitable for | NVR, DVR & PTZ-camera | C-WERK clients | NVR, DVR, PTZ-camera |
| Video Outputs | — | — | 1x DVI, 1x HDMI |
| Operating Temperature | -10°C ~ 55°C | 0°C ~ 45°C | -10°C ~ 55°C |
| Supply Voltage | 12 VDC | 5 VDC by USP port | 12 VDC, PoE (IEEE 802.3af) |
| Power Consumption | Max. 4.5 W | Max. 2 W | Max. 15.5 W |



GD-LD-AC2812DC-IR



GD-LD-AC0550DC-IR



GD-LF-BT3611D-IR



GD-LF-BT1150D-IR

| | Essential | Essential | Premium | Premium |
|-------------------------|-----------------|-------------------------------|-----------------|-----------------|
| Lens Focal Length | 5 ~ 50 mm | 3.6 ~ 11 mm | 11 ~ 50 mm | 11 ~ 50 mm |
| Iris F-Number | F= 1.4 ~ 360 | F= 1.5 ~ 360 | F= 1.4 ~ 360 | F= 1.4 ~ 360 |
| Lens Drive Type | Auto Iris (DC) | Auto Iris (DC) | Auto Iris (DC) | Auto Iris (DC) |
| Lens Mount | CS mount | CS mount | CS mount | CS mount |
| Material | Aluminium alloy | Polycarbonate and Glass Fiber | Aluminium alloy | Aluminium alloy |
| Max. Image Format | 1/2,7" | 1/1.8" | 1/1.8" | 1/1.8" |
| Minimum Object Distance | 0.5 m | 0.2 m | 1.5 m | 1.5 m |

1
2 3
4
5
6
7
8
9
10

GD-CI-AT8746P

1 GD: Grundig

2 C: Camera

3 I: IP

4 Version N° A-Z

5 Product Line
C: Essential
P: Professional
T: Premium

6 Resolution
1-12 Mpx

7 Voltage
0: 230V AC
1: 12V DC
2: 24V AC
3: 12V DC / 24V AC
4: PoE

10 Form Factor
B: Box
V: Dome
Z: Zoom Box
P: PTZ
T: Tube / Bullet
C: Cube
E: Eye Ball
F: Fisheye
W: Minidome
H: Heater
M: Module

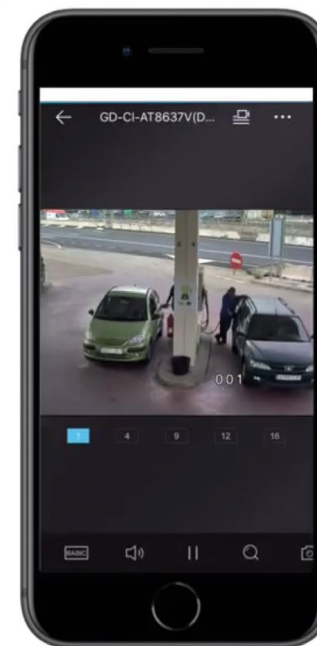
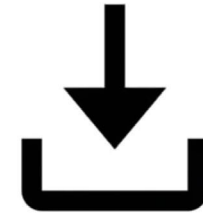
9 ICR / WDR / LED
1: Color
2: Day / Night (Soft)
3: Day / Night ICR
5: WDR Day / Night ICR
6: ICR + LED
7: WDR Day / Night ICR LED
8: Laser

8 Lens
0: No Lens
1: Fix Lens
2: Vario Focal Lens
3: Motorized Vario Focal Lens
4: Motorized Zoom Lens

THE SCMS APP BY GRUNDIG SECURITY: INSTALLED & CONFIGURED IN NO TIME!

Supreme Central Monitoring Service is a surveillance application for mobile phone and tablet supporting the full line of surveillance products, including NVRs, DVRs, as well as network cameras and speed domes that support cloud P2P function. The Mobile Software App has been designed to help small businesses effectively operate and manage security devices from a smartphone or tablet. The power to view live images, play back footage, and receive notifications remotely keeps owners and operators in touch with their business, even when away.

- Real-time video preview of up to 16 channels
- Swipe for PTZ control and camera movement, pinch to zoom in/out in preview mode
- Preset activation and configuration as well as brightness calibration supported
- Push alarm notification
- Snapshot function
- Manage up to 256 device sets; add/delete/modify device profiles



www.grundig-security.com.tr

İntegral Kurumsal Teknoloji Çözümleri San. ve Tic. Ltd. Şti.
info@grundig-security.com.tr

Errors excepted | Grundig reverses the right to change specifications without notice | ABETECHS GMBH 2024

İNTEGRAL[®]
Grup

GRUNDIG
Authorized Distributor